

Anti-Histone H3 (MonoMethyl-K9) Antibody
Rabbit polyclonal antibody to Histone H3 (MonoMethyl-K9)
Catalog # AP61425**Specification**

Anti-Histone H3 (MonoMethyl-K9) Antibody - Product Information

Application	WB, IHC
Primary Accession	P68431 , Q71DI3 , P84243 , Q6NXT2
Reactivity	Human, Mouse, Rat, Zebrafish, Pig, Chicken, Bovine
Host	Rabbit
Clonality	Polyclonal

Anti-Histone H3 (MonoMethyl-K9) Antibody - Additional Information**Other Names**

HIST1H3A; H3FA; HIST1H3B; H3FL; HIST1H3C; H3FC; HIST1H3D; H3FB; HIST1H3E; H3FD; HIST1H3F; H3FI; HIST1H3G; H3FH; HIST1H3H; H3FK; HIST1H3I; H3FF; HIST1H3J; H3FJ; Histone H3.1; Histone H3/a; Histone H3/b; Histone H3/c; Histone H3/d; Histone H3/f; Histone H3/h; Histone H3/i; Histone H3/j; Histone H3/k; Histone H3/l; HIST2H3A; HIST2H3C; H3F2; H3FM; HIST2H3D; Histone H3.2; Histone H3/m; Histone H3/o; H3F3A; H3.3A; H3F3; PP781; H3F3B; H3.3B; Histone H3.3; H3F3C; Histone H3.3C; Histone H3.5

Target/Specificity

KLH-conjugated synthetic peptide encompassing a sequence within the N-term region of human Histone H3 with a site at MonoMethyl-K9. The exact sequence is proprietary.

Dilution

WB~~WB (1/500 - 1/1000), IH (1/50 - 1/200)
IHC~~1:100~500

Format

Liquid in 0.42% Potassium phosphate, 0.87% Sodium chloride, pH 7.3, 30% glycerol, and 0.09% (W/V) sodium azide.

Storage

Store at -20 °C. Stable for 12 months from date of receipt

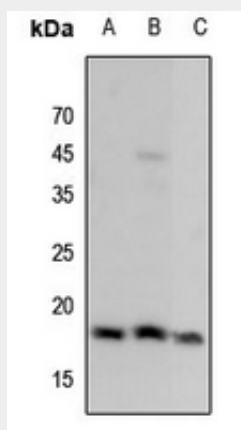
Anti-Histone H3 (MonoMethyl-K9) Antibody - Protein Information**Anti-Histone H3 (MonoMethyl-K9) Antibody - Protocols**

Provided below are standard protocols that you may find useful for product applications.

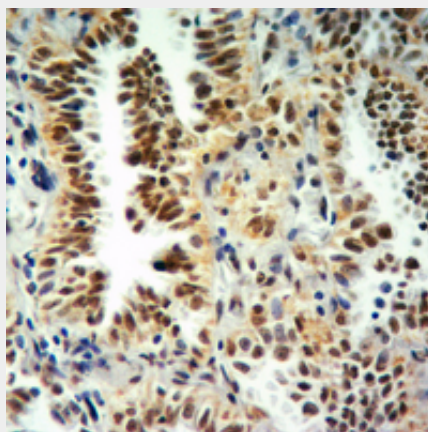
- [Western Blot](#)
- [Blocking Peptides](#)

- [Dot Blot](#)
- [Immunohistochemistry](#)
- [Immunofluorescence](#)
- [Immunoprecipitation](#)
- [Flow Cytometry](#)
- [Cell Culture](#)

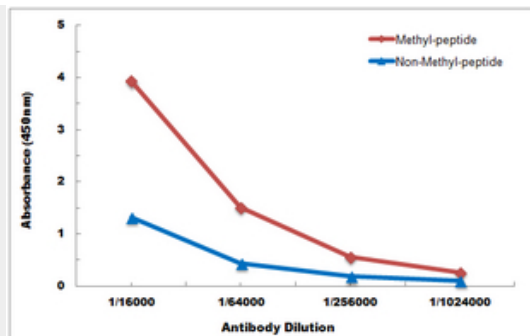
Anti-Histone H3 (MonoMethyl-K9) Antibody - Images



Western blot analysis of Histone H3 (MonoMethyl-K9) expression in U2OS (A), DLD (B), rat testis (C) whole cell lysates.



Immunohistochemical analysis of Histone H3 (MonoMethyl-K9) staining in human lung cancer formalin fixed paraffin embedded tissue section. The section was pre-treated using heat mediated antigen retrieval with sodium citrate buffer (pH 6.0). The section was then incubated with the antibody at room temperature and detected using an HRP conjugated compact polymer system. DAB was used as the chromogen. The section was then counterstained with haematoxylin and mounted with DPX.



Direct ELISA antibody dose-response curve using Anti-Histone H3 (MonoMethyl-K9) Antibody. Antigen (methyl-peptide and non-methyl-peptide) concentration is 5 ug/ml. Goat Anti-Rabbit IgG (H&L) - HRP was used as the secondary antibody, and signal was developed by TMB substrate.

Anti-Histone H3 (MonoMethyl-K9) Antibody - Background

KLH-conjugated synthetic peptide encompassing a sequence within the N-term region of human Histone H3 with a site at MonoMethyl-K9. The exact sequence is proprietary.