

Anti-Histone H3 (MonoMethyl-K23) Antibody
Rabbit polyclonal antibody to Histone H3 (MonoMethyl-K23)
Catalog # AP61435**Specification**

Anti-Histone H3 (MonoMethyl-K23) Antibody - Product Information

Application	WB, E
Primary Accession	P68431 , Q71DI3 , P84243 , Q6NXT2
Reactivity	Human, Mouse, Rat, Zebrafish, Pig, Chicken, Bovine
Host	Rabbit
Clonality	Polyclonal

Anti-Histone H3 (MonoMethyl-K23) Antibody - Additional Information**Other Names**

HIST1H3A; H3FA; HIST1H3B; H3FL; HIST1H3C; H3FC; HIST1H3D; H3FB; HIST1H3E; H3FD; HIST1H3F; H3FI; HIST1H3G; H3FH; HIST1H3H; H3FK; HIST1H3I; H3FF; HIST1H3J; H3FJ; Histone H3.1; Histone H3/a; Histone H3/b; Histone H3/c; Histone H3/d; Histone H3/f; Histone H3/h; Histone H3/i; Histone H3/j; Histone H3/k; Histone H3/l; HIST2H3A; HIST2H3C; H3F2; H3FM; HIST2H3D; Histone H3.2; Histone H3/m; Histone H3/o; H3F3A; H3.3A; H3F3; PP781; H3F3B; H3.3B; Histone H3.3; H3F3C; Histone H3.3C; Histone H3.5

Target/Specificity

Recognizes endogenous levels of Histone H3 with a site at MonoMethyl-K23 protein.

Dilution

WB~~WB (1/500 - 1/1000)

E~~WB (1/500 - 1/1000)

Format

Liquid in 0.42% Potassium phosphate, 0.87% Sodium chloride, pH 7.3, 30% glycerol, and 0.09% (W/V) sodium azide.

Storage

Store at -20 °C. Stable for 12 months from date of receipt

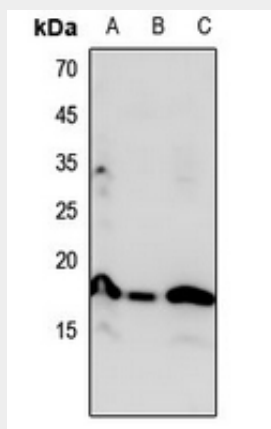
Anti-Histone H3 (MonoMethyl-K23) Antibody - Protein Information**Anti-Histone H3 (MonoMethyl-K23) Antibody - Protocols**

Provided below are standard protocols that you may find useful for product applications.

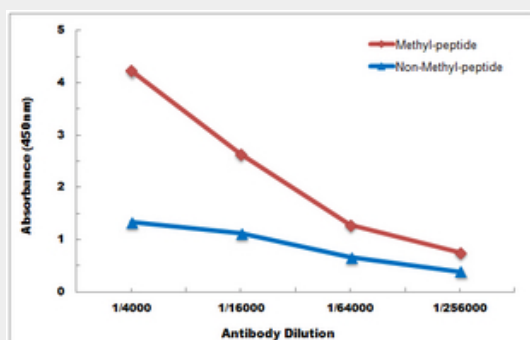
- [Western Blot](#)
- [Blocking Peptides](#)
- [Dot Blot](#)

- [Immunohistochemistry](#)
- [Immunofluorescence](#)
- [Immunoprecipitation](#)
- [Flow Cytometry](#)
- [Cell Culture](#)

Anti-Histone H3 (MonoMethyl-K23) Antibody - Images



Western blot analysis of Histone H3 (MonoMethyl-K23) expression in HEK293T (A), A549 (B), H446 (C) whole cell lysates.



Direct ELISA antibody dose-response curve using Anti-Histone H3 (MonoMethyl-K23) Antibody. Antigen (methyl-peptide and non-methyl-peptide) concentration is 5 ug/ml. Goat Anti-Rabbit IgG (H&L) - HRP was used as the secondary antibody, and signal was developed by TMB substrate.

Anti-Histone H3 (MonoMethyl-K23) Antibody - Background

KLH-conjugated synthetic peptide encompassing a sequence within the N-term region of human Histone H3 with a site at MonoMethyl-K23. The exact sequence is proprietary.