

Anti-FOXH1 Antibody
Rabbit polyclonal antibody to FOXH1
Catalog # AP61441**Specification**

Anti-FOXH1 Antibody - Product Information

Application	WB, IF
Primary Accession	O75593
Reactivity	Human, Bovine
Host	Rabbit
Clonality	Polyclonal
Calculated MW	39257

Anti-FOXH1 Antibody - Additional Information**Gene ID** 8928**Other Names**

FAST1; FAST2; Forkhead box protein H1; Forkhead activin signal transducer 1; Fast-1; hFAST-1; Forkhead activin signal transducer 2; Fast-2

Target/Specificity

Recognizes endogenous levels of FOXH1 protein.

Dilution

WB~~WB (1/500 - 1/1000), IF/IC (1/50 - 1/200)

IF~~WB (1/500 - 1/1000), IF/IC (1/50 - 1/200)

Format

Liquid in 0.42% Potassium phosphate, 0.87% Sodium chloride, pH 7.3, 30% glycerol, and 0.09% (W/V) sodium azide.

Storage

Store at -20 °C. Stable for 12 months from date of receipt

Anti-FOXH1 Antibody - Protein Information**Name** FOXH1**Synonyms** FAST1, FAST2**Function**

Transcriptional activator. Recognizes and binds to the DNA sequence 5'-TGT[GT][GT]ATT-3'. Required for induction of the goosecoid (GSC) promoter by TGF-beta or activin signaling. Forms a transcriptionally active complex containing FOXH1/SMAD2/SMAD4 on a site on the GSC promoter called TARE (TGF-beta/activin response element).

Cellular Location

Nucleus.

Tissue Location

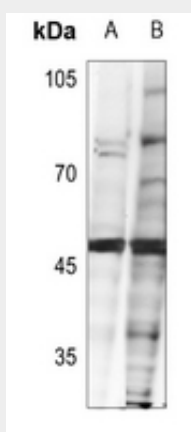
Ubiquitous..

Anti-FOXH1 Antibody - Protocols

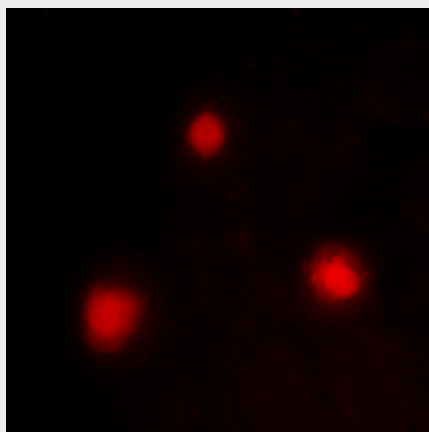
Provided below are standard protocols that you may find useful for product applications.

- [Western Blot](#)
- [Blocking Peptides](#)
- [Dot Blot](#)
- [Immunohistochemistry](#)
- [Immunofluorescence](#)
- [Immunoprecipitation](#)
- [Flow Cytometry](#)
- [Cell Culture](#)

Anti-FOXH1 Antibody - Images



Western blot analysis of FOXH1 expression in SGC7901 (A), Myla2059 (B) whole cell lysates.



Immunofluorescent analysis of FOXH1 staining in A549 cells. Formalin-fixed cells were permeabilized with 0.1% Triton X-100 in TBS for 5-10 minutes and blocked with 3% BSA-PBS for 30 minutes at room temperature. Cells were probed with the primary antibody in 3% BSA-PBS and incubated overnight at 4 °C in a humidified chamber. Cells were washed with PBST and incubated

with a Alexa Fluor 594-conjugated secondary antibody (red) in PBS at room temperature in the dark.

Anti-FOXH1 Antibody - Background

KLH-conjugated synthetic peptide encompassing a sequence within the N-term region of human FOXH1. The exact sequence is proprietary.