

Anti-R Cadherin Antibody
Rabbit polyclonal antibody to R Cadherin
Catalog # AP61467**Specification**

Anti-R Cadherin Antibody - Product Information

Application	WB, IHC, IF
Primary Accession	P55283
Other Accession	P39038
Reactivity	Human, Mouse, Rat, Chicken
Host	Rabbit
Clonality	Polyclonal
Calculated MW	100281

Anti-R Cadherin Antibody - Additional Information**Gene ID** 1002**Other Names**

Cadherin-4; Retinal cadherin; R-CAD; R-cadherin

Target/Specificity

Recognizes endogenous levels of R Cadherin protein.

Dilution

WB~~WB (1/500 - 1/1000), IH (1/50 - 1/200), IF/IC (1/50 - 1/200)

IHC~~1:100~500

IF~~WB (1/500 - 1/1000), IH (1/50 - 1/200), IF/IC (1/50 - 1/200)

Format

Liquid in 0.42% Potassium phosphate, 0.87% Sodium chloride, pH 7.3, 30% glycerol, and 0.09% (W/V) sodium azide.

Storage

Store at -20 °C. Stable for 12 months from date of receipt

Anti-R Cadherin Antibody - Protein Information**Name** CDH4**Function**

Cadherins are calcium-dependent cell adhesion proteins. They preferentially interact with themselves in a homophilic manner in connecting cells; cadherins may thus contribute to the sorting of heterogeneous cell types. May play an important role in retinal development.

Cellular Location

Cell membrane; Single-pass type I membrane protein

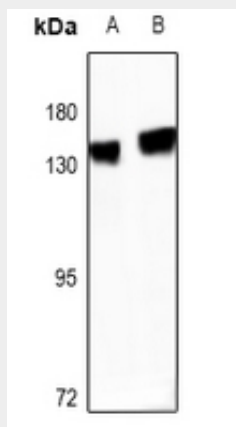
Tissue Location

Expressed mainly in brain but also found in other tissues

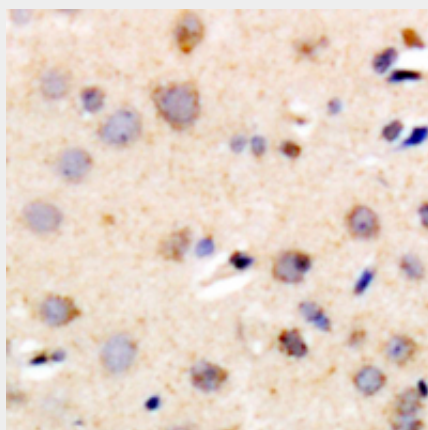
Anti-R Cadherin Antibody - Protocols

Provided below are standard protocols that you may find useful for product applications.

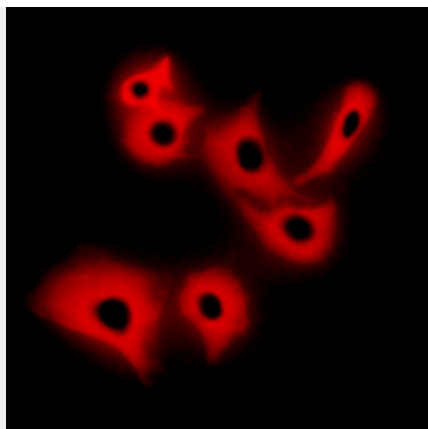
- [Western Blot](#)
- [Blocking Peptides](#)
- [Dot Blot](#)
- [Immunohistochemistry](#)
- [Immunofluorescence](#)
- [Immunoprecipitation](#)
- [Flow Cytometry](#)
- [Cell Culture](#)

Anti-R Cadherin Antibody - Images

Western blot analysis of R Cadherin expression in mouse brain (A), rat brain (B) whole cell lysates.



Immunohistochemical analysis of R Cadherin staining in human brain formalin fixed paraffin embedded tissue section. The section was pre-treated using heat mediated antigen retrieval with sodium citrate buffer (pH 6.0). The section was then incubated with the antibody at room temperature and detected using an HRP conjugated compact polymer system. DAB was used as the chromogen. The section was then counterstained with haematoxylin and mounted with DPX.



Immunofluorescent analysis of R Cadherin staining in A549 cells. Formalin-fixed cells were permeabilized with 0.1% Triton X-100 in TBS for 5-10 minutes and blocked with 3% BSA-PBS for 30 minutes at room temperature. Cells were probed with the primary antibody in 3% BSA-PBS and incubated overnight at 4 °C in a humidified chamber. Cells were washed with PBST and incubated with a Alexa Fluor 594-conjugated secondary antibody (red) in PBS at room temperature in the dark.

Anti-R Cadherin Antibody - Background

KLH-conjugated synthetic peptide encompassing a sequence within the C-term region of human R Cadherin. The exact sequence is proprietary.