

Anti-PXMP4 Antibody
Rabbit polyclonal antibody to PXMP4
Catalog # AP61470**Specification**

Anti-PXMP4 Antibody - Product Information

Application	WB, IHC
Primary Accession	O9Y6I8
Other Accession	O9JJW0
Reactivity	Human, Mouse, Rat
Host	Rabbit
Clonality	Polyclonal
Calculated MW	24264

Anti-PXMP4 Antibody - Additional Information**Gene ID** 11264**Other Names**

PMP24; Peroxisomal membrane protein 4; 24 kDa peroxisomal intrinsic membrane protein

Target/Specificity

KLH-conjugated synthetic peptide encompassing a sequence within the N-term region of human PXMP4. The exact sequence is proprietary.

Dilution

WB~~WB (1/500 - 1/1000), IH (1/50 - 1/200)

IHC~~1:100~500

Format

Liquid in 0.42% Potassium phosphate, 0.87% Sodium chloride, pH 7.3, 30% glycerol, and 0.09% (W/V) sodium azide.

Storage

Store at -20 °C. Stable for 12 months from date of receipt

Anti-PXMP4 Antibody - Protein Information**Name** PXMP4**Synonyms** PMP24**Cellular Location**

Peroxisome membrane; Multi-pass membrane protein

Tissue Location

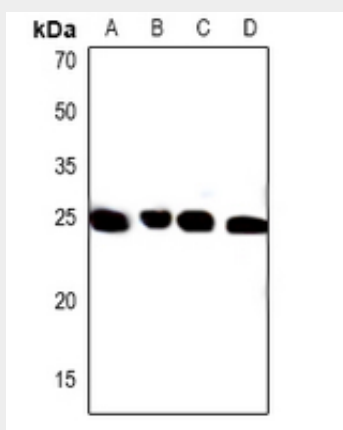
Expressed in normal prostate epithelial cells, and androgen-sensitive prostate adenocarcinoma cells. Not expressed in androgen-insensitive prostate adenocarcinoma cells

Anti-PXMP4 Antibody - Protocols

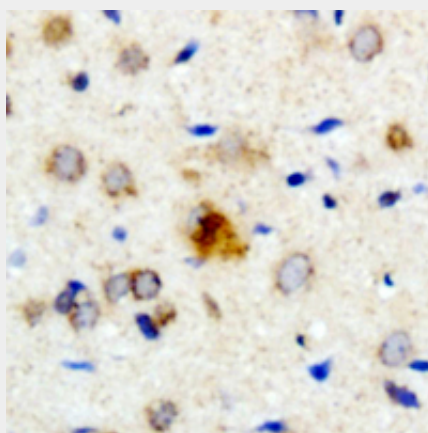
Provided below are standard protocols that you may find useful for product applications.

- [Western Blot](#)
- [Blocking Peptides](#)
- [Dot Blot](#)
- [Immunohistochemistry](#)
- [Immunofluorescence](#)
- [Immunoprecipitation](#)
- [Flow Cytometry](#)
- [Cell Culture](#)

Anti-PXMP4 Antibody - Images



Western blot analysis of PXMP4 expression in mouse lung (A), mouse kidney (B), rat lung (C), rat kidney (D) whole cell lysates.



Immunohistochemical analysis of PXMP4 staining in human brain formalin fixed paraffin embedded tissue section. The section was pre-treated using heat mediated antigen retrieval with sodium citrate buffer (pH 6.0). The section was then incubated with the antibody at room temperature and detected using an HRP conjugated compact polymer system. DAB was used as the chromogen. The section was then counterstained with haematoxylin and mounted with DPX.

Anti-PXMP4 Antibody - Background

KLH-conjugated synthetic peptide encompassing a sequence within the N-term region of human

PXMP4. The exact sequence is proprietary.