

**Anti-SHCC Antibody**  
Rabbit polyclonal antibody to SHCC  
Catalog # AP61472**Specification**

---

**Anti-SHCC Antibody - Product Information**

Application	<b>WB, IHC</b>
Primary Accession	<a href="#">O92529</a>
Reactivity	<b>Human</b>
Host	<b>Rabbit</b>
Clonality	<b>Polyclonal</b>
Calculated MW	<b>64056</b>

**Anti-SHCC Antibody - Additional Information****Gene ID** 53358**Other Names**

NSHC; SHCC; SHC-transforming protein 3; Neuronal Shc; N-Shc; Protein Raj; SHC-transforming protein C; Src homology 2 domain-containing-transforming protein C3; SH2 domain protein C3

**Target/Specificity**

KLH-conjugated synthetic peptide encompassing a sequence within the center region of human SHCC. The exact sequence is proprietary.

**Dilution**WB~~WB (1/500 - 1/1000), IH (1/50 - 1/200)  
IHC~~1:100~500**Format**

Liquid in 0.42% Potassium phosphate, 0.87% Sodium chloride, pH 7.3, 30% glycerol, and 0.09% (W/V) sodium azide.

**Storage**

Store at -20 °C. Stable for 12 months from date of receipt

**Anti-SHCC Antibody - Protein Information****Name** SHC3**Synonyms** NSHC, SHCC**Function**

Signaling adapter that couples activated growth factor receptors to signaling pathway in neurons. Involved in the signal transduction pathways of neurotrophin-activated Trk receptors in cortical neurons.

**Tissue Location**

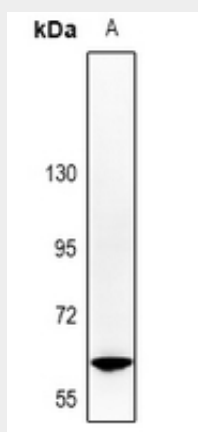
Mainly expressed in brain. Hardly detectable in other tissues, except in pancreas. Highly expressed in the cerebral cortex, frontal and temporal lobes, occipital pole, hippocampus, caudate nucleus and amygdala. Expressed at low level in the cerebellum, medulla and spinal cord.

### Anti-SHCC Antibody - Protocols

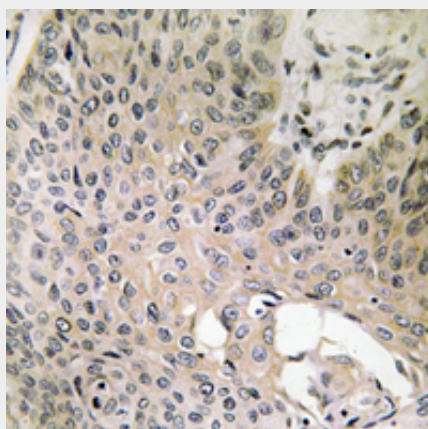
Provided below are standard protocols that you may find useful for product applications.

- [Western Blot](#)
- [Blocking Peptides](#)
- [Dot Blot](#)
- [Immunohistochemistry](#)
- [Immunofluorescence](#)
- [Immunoprecipitation](#)
- [Flow Cytometry](#)
- [Cell Culture](#)

### Anti-SHCC Antibody - Images



Western blot analysis of SHCC expression in U87MG (A) whole cell lysates.



Immunohistochemical analysis of SHCC staining in human lung cancer formalin fixed paraffin embedded tissue section. The section was pre-treated using heat mediated antigen retrieval with sodium citrate buffer (pH 6.0). The section was then incubated with the antibody at room temperature and detected using an HRP conjugated compact polymer system. DAB was used as the chromogen. The section was then counterstained with haematoxylin and mounted with DPX.

**Anti-SHCC Antibody - Background**

KLH-conjugated synthetic peptide encompassing a sequence within the center region of human SHCC. The exact sequence is proprietary.