

Anti-Complement C1s LC Antibody
Rabbit polyclonal antibody to Complement C1s LC
Catalog # AP61476

Specification

Anti-Complement C1S LC Antibody - Product Information

Application	WB
Primary Accession	P09871
Reactivity	Human, Rat
Host	Rabbit
Clonality	Polyclonal
Calculated MW	76684

Anti-Complement C1S LC Antibody - Additional Information

Gene ID 716

Other Names

Complement C1s subcomponent; C1 esterase; Complement component 1 subcomponent s

Target/Specificity

KLH-conjugated synthetic peptide encompassing a sequence within the center region of human Complement C1S LC. The exact sequence is proprietary.

Dilution

WB~~WB (1/500 - 1/1000)

Format

Liquid in 0.42% Potassium phosphate, 0.87% Sodium chloride, pH 7.3, 30% glycerol, and 0.09% (W/V) sodium azide.

Storage

Store at -20 °C.Stable for 12 months from date of receipt

Anti-Complement C1S LC Antibody - Protein Information

Name C1S {ECO:0000303|PubMed:3500856, ECO:0000312|HGNC:HGNC:1247}

Function

Component of the complement C1 complex, a multiprotein complex that initiates the classical pathway of the complement system, a cascade of proteins that leads to phagocytosis and breakdown of pathogens and signaling that strengthens the adaptive immune system (PubMed:11445589, PubMed:16169853, PubMed:417728, PubMed:467643, PubMed:6271784, PubMed:6282646, PubMed:<a

[6319179](http://www.uniprot.org/citations/6319179), PubMed:70787, PubMed:9422791). C1S is activated following association of the C1 complex with immunoglobulins (IgG or IgM) complexed with antigens to form antigen-antibody complexes on the surface of pathogens (PubMed:34155115). C1S is cleaved and activated by C1R to generate C1s subcomponent heavy and light chains (PubMed:11445589, PubMed:6271784). C1s subcomponent light chain then cleaves and activates C2 and C4, the next components of the classical complement pathway (PubMed:16169853, PubMed:467643, PubMed:6282646, PubMed:6319179, PubMed:6906228, PubMed:70787, PubMed:9422791).

Cellular Location

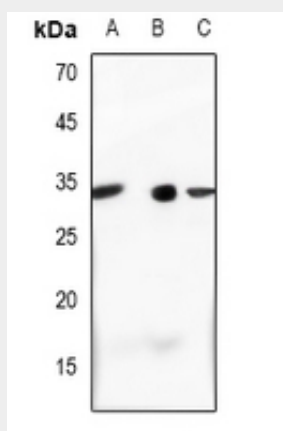
Secreted. Cell surface. Note=Recruited to the surface of pathogens by the C1Q subcomplex.

Anti-Complement C1S LC Antibody - Protocols

Provided below are standard protocols that you may find useful for product applications.

- [Western Blot](#)
- [Blocking Peptides](#)
- [Dot Blot](#)
- [Immunohistochemistry](#)
- [Immunofluorescence](#)
- [Immunoprecipitation](#)
- [Flow Cytometry](#)
- [Cell Culture](#)

Anti-Complement C1S LC Antibody - Images



Western blot analysis of Complement C1S LC expression in H1688 (A), A549 (B), rat liver (C) whole cell lysates.

Anti-Complement C1S LC Antibody - Background

KLH-conjugated synthetic peptide encompassing a sequence within the center region of human Complement C1S LC. The exact sequence is proprietary.