

Anti-GPR146 Antibody
Rabbit polyclonal antibody to GPR146
Catalog # AP61477**Specification**

Anti-GPR146 Antibody - Product Information

Application	WB, IF
Primary Accession	O96CH1
Reactivity	Human, Rat
Host	Rabbit
Clonality	Polyclonal
Calculated MW	36580

Anti-GPR146 Antibody - Additional Information**Gene ID** 115330**Other Names**

PGR8; Probable G-protein coupled receptor 146; G-protein coupled receptor PGR8

Target/Specificity

KLH-conjugated synthetic peptide encompassing a sequence within the center region of human GPR146. The exact sequence is proprietary.

Dilution

WB~~WB (1/500 - 1/1000), IF/IC (1/50 - 1/200)

IF~~WB (1/500 - 1/1000), IF/IC (1/50 - 1/200)

Format

Liquid in 0.42% Potassium phosphate, 0.87% Sodium chloride, pH 7.3, 30% glycerol, and 0.09% (W/V) sodium azide.

Storage

Store at -20 °C. Stable for 12 months from date of receipt

Anti-GPR146 Antibody - Protein Information**Name** GPR146**Synonyms** PGR8**Function**

G-protein coupled receptor required for the regulation of plasma cholesterol levels (PubMed: [31778654](http://www.uniprot.org/citations/31778654), PubMed: [38503280](http://www.uniprot.org/citations/38503280)). Receptor for CHLSN, a gut derived hormone which mediates an inhibitory effect of intestinal cholesterol absorption on hepatic cholesterol synthesis. Cholesin-binding exerts an antagonistic effect by inhibiting PKA signaling and suppressing SREBF2-controlled cholesterol in the liver (PubMed: [38503280](#)).

href="http://www.uniprot.org/citations/38503280" target="_blank">38503280).

Cellular Location

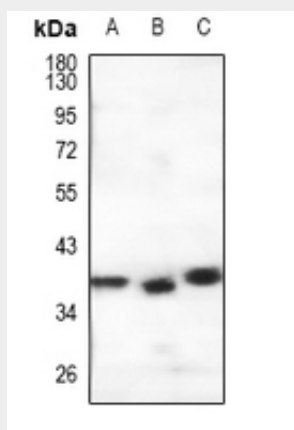
Cell membrane; Multi-pass membrane protein

Anti-GPR146 Antibody - Protocols

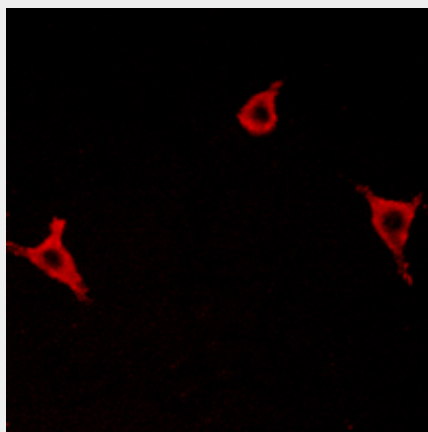
Provided below are standard protocols that you may find useful for product applications.

- [Western Blot](#)
- [Blocking Peptides](#)
- [Dot Blot](#)
- [Immunohistochemistry](#)
- [Immunofluorescence](#)
- [Immunoprecipitation](#)
- [Flow Cytometry](#)
- [Cell Culture](#)

Anti-GPR146 Antibody - Images



Western blot analysis of GPR146 expression in A549 (A), HeLa (B), rat lung (C) whole cell lysates.



Immunofluorescent analysis of GPR146 staining in LOVO cells. Formalin-fixed cells were permeabilized with 0.1% Triton X-100 in TBS for 5-10 minutes and blocked with 3% BSA-PBS for 30 minutes at room temperature. Cells were probed with the primary antibody in 3% BSA-PBS and incubated overnight at 4 °C in a humidified chamber. Cells were washed with PBST and incubated

with a Alexa Fluor 594-conjugated secondary antibody (red) in PBS at room temperature in the dark.

Anti-GPR146 Antibody - Background

KLH-conjugated synthetic peptide encompassing a sequence within the center region of human GPR146. The exact sequence is proprietary.