

**Anti-Orexin Receptor 1 Antibody**  
**Rabbit polyclonal antibody to Orexin Receptor 1**  
**Catalog # AP61479****Specification**

---

**Anti-Orexin Receptor 1 Antibody - Product Information**

Application	WB, IF
Primary Accession	<a href="#">O43613</a>
Other Accession	<a href="#">P58307</a>
Reactivity	Human, Mouse, Rat
Host	Rabbit
Clonality	Polyclonal
Calculated MW	47536

**Anti-Orexin Receptor 1 Antibody - Additional Information****Gene ID** 3061**Other Names**

Orexin receptor type 1; Ox-1-R; Ox1-R; Ox1R; Hypocretin receptor type 1

**Target/Specificity**

Recognizes endogenous levels of Orexin Receptor 1 protein.

**Dilution**

WB~~WB (1/500 - 1/1000), IF/IC (1/50 - 1/200)

IF~~WB (1/500 - 1/1000), IF/IC (1/50 - 1/200)

**Format**

Liquid in 0.42% Potassium phosphate, 0.87% Sodium chloride, pH 7.3, 30% glycerol, and 0.09% (W/V) sodium azide.

**Storage**

Store at -20 °C. Stable for 12 months from date of receipt

**Anti-Orexin Receptor 1 Antibody - Protein Information****Name** HCRTR1 ([HGNC:4848](#))**Function**

Moderately selective excitatory receptor for orexin-A and, with a lower affinity, for orexin-B neuropeptide (PubMed: [26950369](http://www.uniprot.org/citations/26950369), PubMed: [9491897](http://www.uniprot.org/citations/9491897)). Triggers an increase in cytoplasmic Ca(2+) levels in response to orexin-A binding (PubMed: [26950369](http://www.uniprot.org/citations/26950369), PubMed: [9491897](http://www.uniprot.org/citations/9491897)).

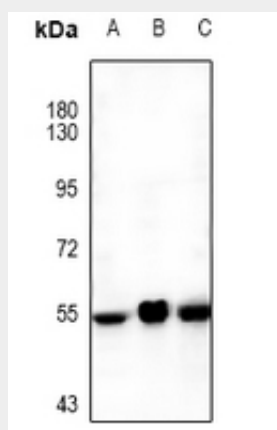
**Cellular Location**

Cell membrane; Multi-pass membrane protein

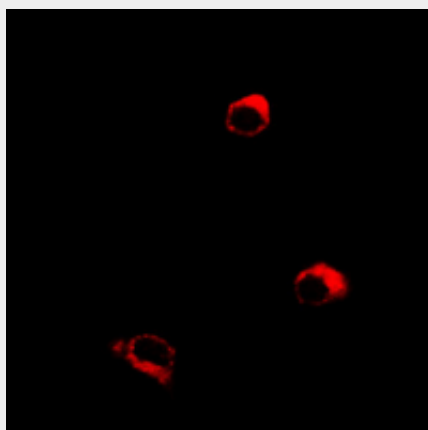
**Anti-Orexin Receptor 1 Antibody - Protocols**

Provided below are standard protocols that you may find useful for product applications.

- [Western Blot](#)
- [Blocking Peptides](#)
- [Dot Blot](#)
- [Immunohistochemistry](#)
- [Immunofluorescence](#)
- [Immunoprecipitation](#)
- [Flow Cytometry](#)
- [Cell Culture](#)

**Anti-Orexin Receptor 1 Antibody - Images**

Western blot analysis of Orexin Receptor 1 expression in U87MG (A), rat brain (B), mouse brain (C) whole cell lysates.



Immunofluorescent analysis of Orexin Receptor 1 staining in MCF7 cells. Formalin-fixed cells were permeabilized with 0.1% Triton X-100 in TBS for 5-10 minutes and blocked with 3% BSA-PBS for 30 minutes at room temperature. Cells were probed with the primary antibody in 3% BSA-PBS and incubated overnight at 4 °C in a humidified chamber. Cells were washed with PBST and incubated with a Alexa Fluor 594-conjugated secondary antibody (red) in PBS at room temperature in the

dark.

#### **Anti-Orexin Receptor 1 Antibody - Background**

KLH-conjugated synthetic peptide encompassing a sequence within the center region of human Orexin Receptor 1. The exact sequence is proprietary.