

Anti-CD339 Antibody
Rabbit polyclonal antibody to CD339
Catalog # AP61484**Specification**

Anti-CD339 Antibody - Product Information

| | |
|-------------------|--------------------------|
| Application | WB |
| Primary Accession | P78504 |
| Other Accession | Q9OXX0 |
| Reactivity | Human, Mouse, Rat |
| Host | Rabbit |
| Clonality | Polyclonal |
| Calculated MW | 133799 |

Anti-CD339 Antibody - Additional Information**Gene ID** 182**Other Names**

JAGL1; Protein jagged-1; Jagged1; hJ1; CD339

Target/Specificity

KLH-conjugated synthetic peptide encompassing a sequence within the center region of human CD339. The exact sequence is proprietary.

Dilution

WB~~WB (1/500 - 1/1000)

Format

Liquid in 0.42% Potassium phosphate, 0.87% Sodium chloride, pH 7.3, 30% glycerol, and 0.09% (W/V) sodium azide.

Storage

Store at -20 °C. Stable for 12 months from date of receipt

Anti-CD339 Antibody - Protein Information**Name** JAG1**Synonyms** JAGL1**Function**

Ligand for multiple Notch receptors and involved in the mediation of Notch signaling (PubMed: [18660822](http://www.uniprot.org/citations/18660822), PubMed: [20437614](http://www.uniprot.org/citations/20437614)). May be involved in cell-fate decisions during hematopoiesis (PubMed: [9462510](http://www.uniprot.org/citations/9462510)). Seems to be involved in early and late stages of mammalian cardiovascular development. Inhibits myoblast

differentiation (By similarity). Enhances fibroblast growth factor-induced angiogenesis (in vitro).

Cellular Location

Membrane; Single-pass type I membrane protein. Cell membrane

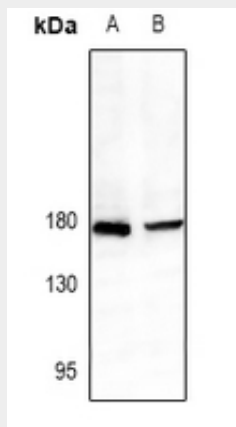
Tissue Location

Widely expressed in adult and fetal tissues. In cervix epithelium expressed in undifferentiated subcolumnar reserve cells and squamous metaplasia. Expression is up-regulated in cervical squamous cell carcinoma. Expressed in bone marrow cell line HS-27a which supports the long-term maintenance of immature progenitor cells

Anti-CD339 Antibody - Protocols

Provided below are standard protocols that you may find useful for product applications.

- [Western Blot](#)
- [Blocking Peptides](#)
- [Dot Blot](#)
- [Immunohistochemistry](#)
- [Immunofluorescence](#)
- [Immunoprecipitation](#)
- [Flow Cytometry](#)
- [Cell Culture](#)

Anti-CD339 Antibody - Images

Western blot analysis of CD339 expression in C6 (A), CT26 (B) whole cell lysates.

Anti-CD339 Antibody - Background

KLH-conjugated synthetic peptide encompassing a sequence within the center region of human CD339. The exact sequence is proprietary.