

**Anti-Cyclophilin D Antibody**  
**Rabbit polyclonal antibody to Cyclophilin D**  
**Catalog # AP61486****Specification**

---

**Anti-Cyclophilin D Antibody - Product Information**

Application	WB
Primary Accession	<a href="#">Q08752</a>
Other Accession	<a href="#">Q9CR16</a>
Reactivity	Human, Mouse, Rat
Host	Rabbit
Clonality	Polyclonal
Calculated MW	40764

**Anti-Cyclophilin D Antibody - Additional Information****Gene ID** 5481**Other Names**

CYP40; CYPD; Peptidyl-prolyl cis-trans isomerase D; PPlase D; 40 kDa peptidyl-prolyl cis-trans isomerase; Cyclophilin-40; CYP-40; Cyclophilin-related protein; Rotamase D

**Target/Specificity**

Recognizes endogenous levels of Cyclophilin D protein.

**Dilution**

WB~~WB (1/500 - 1/1000)

**Format**

Liquid in 0.42% Potassium phosphate, 0.87% Sodium chloride, pH 7.3, 30% glycerol, and 0.09% (W/V) sodium azide.

**Storage**

Store at -20 °C. Stable for 12 months from date of receipt

**Anti-Cyclophilin D Antibody - Protein Information****Name** PPID ([HGNC:9257](#))**Synonyms** CYP40, CYPD**Function**

PPlase that catalyzes the cis-trans isomerization of proline imidic peptide bonds in oligopeptides and may therefore assist protein folding (PubMed: [11350175](http://www.uniprot.org/citations/11350175), PubMed: [20676357](http://www.uniprot.org/citations/20676357)). Proposed to act as a co- chaperone in HSP90 complexes such as in unligated steroid receptors heterocomplexes. Different co-chaperones seem to compete for association with HSP90 thus

establishing distinct HSP90-co-chaperone- receptor complexes with the potential to exert tissue-specific receptor activity control. May have a preference for estrogen receptor complexes and is not found in glucocorticoid receptor complexes. May be involved in cytoplasmic dynein-dependent movement of the receptor from the cytoplasm to the nucleus. May regulate MYB by inhibiting its DNA- binding activity. Involved in regulation of AHR signaling by promoting the formation of the AHR:ARNT dimer; the function is independent of HSP90 but requires the chaperone activity. Involved in regulation of UV radiation-induced apoptosis. Promotes cell viability in anaplastic lymphoma kinase-positive anaplastic large-cell lymphoma (ALK+ ALCL) cell lines.

**Cellular Location**

Cytoplasm. Nucleus, nucleolus. Nucleus, nucleoplasm

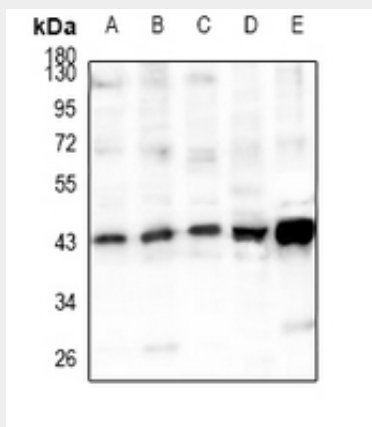
**Tissue Location**

Widely expressed.

**Anti-Cyclophilin D Antibody - Protocols**

Provided below are standard protocols that you may find useful for product applications.

- [Western Blot](#)
- [Blocking Peptides](#)
- [Dot Blot](#)
- [Immunohistochemistry](#)
- [Immunofluorescence](#)
- [Immunoprecipitation](#)
- [Flow Cytometry](#)
- [Cell Culture](#)

**Anti-Cyclophilin D Antibody - Images**

Western blot analysis of Cyclophilin D expression in MCF7 (A), HEK293T (B), U87MG (C), rat kidney (D), mouse brain (E) whole cell lysates.

**Anti-Cyclophilin D Antibody - Background**

KLH-conjugated synthetic peptide encompassing a sequence within the C-term region of human Cyclophilin D. The exact sequence is proprietary.