

Anti-ILF2 Antibody
Rabbit polyclonal antibody to ILF2
Catalog # AP61488**Specification**

Anti-ILF2 Antibody - Product Information

Application	WB
Primary Accession	Q12905
Other Accession	Q9CXY6
Reactivity	Human, Mouse, Rat
Host	Rabbit
Clonality	Polyclonal
Calculated MW	43062

Anti-ILF2 Antibody - Additional Information**Gene ID** 3608**Other Names**

NF45; Interleukin enhancer-binding factor 2; Nuclear factor of activated T-cells 45 kDa

Target/Specificity

Recognizes endogenous levels of ILF2 protein.

Dilution

WB~~WB (1/500 - 1/1000)

Format

Liquid in 0.42% Potassium phosphate, 0.87% Sodium chloride, pH 7.3, 30% glycerol, and 0.09% (W/V) sodium azide.

Storage

Store at -20 °C. Stable for 12 months from date of receipt

Anti-ILF2 Antibody - Protein Information**Name** ILF2**Synonyms** NF45**Function**

Chromatin-interacting protein that forms a stable heterodimer with interleukin enhancer-binding factor 3/ILF3 and plays a role in several biological processes including transcription, innate immunity or cell growth (PubMed: [18458058](http://www.uniprot.org/citations/18458058), PubMed: [31212927](http://www.uniprot.org/citations/31212927)). Essential for the efficient reshuttling of ILF3 (isoform 1 and isoform 2) into the nucleus. Together with ILF3, forms an RNA-binding complex that is required for mitotic progression and cytokinesis by regulating the expression of a cluster of mitotic genes.

Mechanistically, competes with STAU1/STAU2-mediated mRNA decay (PubMed:32433969). Also plays a role in the inhibition of various viruses including Japanese encephalitis virus or enterovirus 71.

Cellular Location

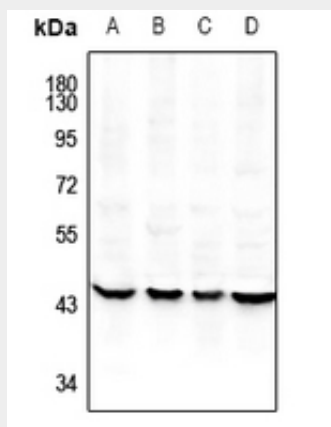
Nucleus, nucleolus. Cytoplasm. Nucleus. Note=Localized in cytoplasmic mRNP granules containing untranslated mRNAs

Anti-ILF2 Antibody - Protocols

Provided below are standard protocols that you may find useful for product applications.

- [Western Blot](#)
- [Blocking Peptides](#)
- [Dot Blot](#)
- [Immunohistochemistry](#)
- [Immunofluorescence](#)
- [Immunoprecipitation](#)
- [Flow Cytometry](#)
- [Cell Culture](#)

Anti-ILF2 Antibody - Images



Western blot analysis of ILF2 expression in Raw264.7 (A), Beas2B (B), HCT116 (C), HEK293T (D) whole cell lysates.

Anti-ILF2 Antibody - Background

KLH-conjugated synthetic peptide encompassing a sequence within the C-term region of human ILF2. The exact sequence is proprietary.