

Anti-IL-1R2 Antibody
Rabbit polyclonal antibody to IL-1R2
Catalog # AP61489**Specification**

Anti-IL-1R2 Antibody - Product Information

Application	WB
Primary Accession	P27930
Other Accession	P27931
Reactivity	Human, Mouse, Rat
Host	Rabbit
Clonality	Polyclonal
Calculated MW	45421

Anti-IL-1R2 Antibody - Additional Information**Gene ID** 7850**Other Names**

IL1RB; Interleukin-1 receptor type 2; IL-1R-2; IL-1RT-2; IL-1RT2; CD121 antigen-like family member B; CDw121b; IL-1 type II receptor; Interleukin-1 receptor beta; IL-1R-beta; Interleukin-1 receptor type II; CD121b

Target/Specificity

KLH-conjugated synthetic peptide encompassing a sequence within the N-term region of human IL-1R2. The exact sequence is proprietary.

Dilution

WB~~WB (1/500 - 1/1000)

Format

Liquid in 0.42% Potassium phosphate, 0.87% Sodium chloride, pH 7.3, 30% glycerol, and 0.09% (W/V) sodium azide.

Storage

Store at -20 °C. Stable for 12 months from date of receipt

Anti-IL-1R2 Antibody - Protein Information**Name** IL1R2**Synonyms** IL1RB**Function**

Non-signaling receptor for IL1A, IL1B and IL1RN. Reduces IL1B activities. Serves as a decoy receptor by competitive binding to IL1B and preventing its binding to IL1R1. Also modulates cellular response through non-signaling association with IL1RAP after binding to IL1B. IL1R2 (membrane and secreted forms) preferentially binds IL1B and poorly IL1A and IL1RN. The secreted

IL1R2 recruits secreted IL1RAP with high affinity; this complex formation may be the dominant mechanism for neutralization of IL1B by secreted/soluble receptors.

Cellular Location

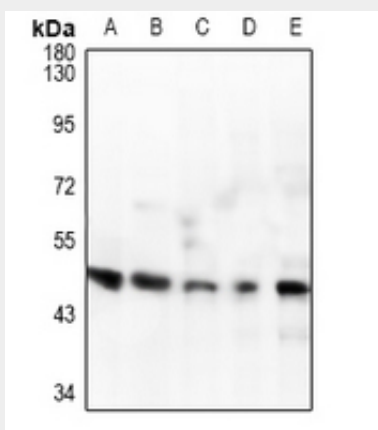
[Isoform Short]: Secreted

Anti-IL-1R2 Antibody - Protocols

Provided below are standard protocols that you may find useful for product applications.

- [Western Blot](#)
- [Blocking Peptides](#)
- [Dot Blot](#)
- [Immunohistochemistry](#)
- [Immunofluorescence](#)
- [Immunoprecipitation](#)
- [Flow Cytometry](#)
- [Cell Culture](#)

Anti-IL-1R2 Antibody - Images



Western blot analysis of IL-1R2 expression in rat lung (A), mouse spleen (B), SHSY5Y (C), Myla2059 (D), A549 (E) whole cell lysates.

Anti-IL-1R2 Antibody - Background

KLH-conjugated synthetic peptide encompassing a sequence within the N-term region of human IL-1R2. The exact sequence is proprietary.