

**Jagged 2 (JAG2) Antibody (C-term)**  
**Purified Rabbit Polyclonal Antibody (Pab)**  
**Catalog # AP6148A****Specification**

---

**Jagged 2 (JAG2) Antibody (C-term) - Product Information**

Application	WB, IHC-P,E
Primary Accession	<a href="#">O9Y219</a>
Other Accession	<a href="#">NP_002217</a>
Reactivity	Human
Host	Rabbit
Clonality	Polyclonal
Isotype	Rabbit IgG
Calculated MW	133367
Antigen Region	1209-1238

**Jagged 2 (JAG2) Antibody (C-term) - Additional Information****Gene ID** 3714**Other Names**

Protein jagged-2, Jagged2, hJ2, JAG2

**Target/Specificity**

This Jagged 2 (JAG2) antibody is generated from rabbits immunized with a KLH conjugated synthetic peptide between 1209-1238 amino acids from the C-terminal region of human Jagged 2 (JAG2).

**Dilution**

WB~~1:1000

IHC-P~~1:50~100

E~~Use at an assay dependent concentration.

**Format**

Purified polyclonal antibody supplied in PBS with 0.09% (W/V) sodium azide. This antibody is prepared by Saturated Ammonium Sulfate (SAS) precipitation followed by dialysis against PBS.

**Storage**

Maintain refrigerated at 2-8°C for up to 2 weeks. For long term storage store at -20°C in small aliquots to prevent freeze-thaw cycles.

**Precautions**

Jagged 2 (JAG2) Antibody (C-term) is for research use only and not for use in diagnostic or therapeutic procedures.

**Jagged 2 (JAG2) Antibody (C-term) - Protein Information****Name** JAG2

**Function** Putative Notch ligand involved in the mediation of Notch signaling. Involved in limb development (By similarity).

**Cellular Location**

Membrane; Single-pass type I membrane protein.

**Tissue Location**

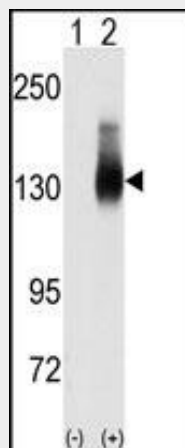
Expressed in heart, placenta and skeletal muscle and to a lesser extent in pancreas. Very low expression in brain, lung, liver and kidney

**Jagged 2 (JAG2) Antibody (C-term) - Protocols**

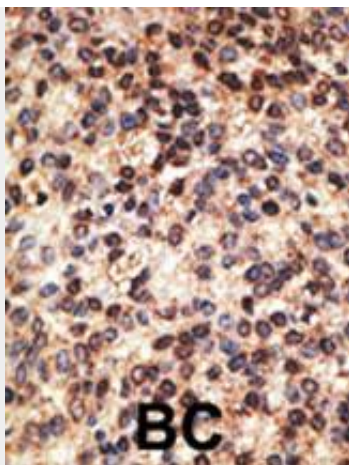
Provided below are standard protocols that you may find useful for product applications.

- [Western Blot](#)
- [Blocking Peptides](#)
- [Dot Blot](#)
- [Immunohistochemistry](#)
- [Immunofluorescence](#)
- [Immunoprecipitation](#)
- [Flow Cytometry](#)
- [Cell Culture](#)

**Jagged 2 (JAG2) Antibody (C-term) - Images**



Western blot analysis of Jag2 (arrow) using JAG2 Antibody (C-term) (Cat.#AP6148a). 293 cell lysates (2 ug/lane) either nontransfected (Lane 1) or transiently transfected with the JAG2 gene (Lane 2) (Origene Technologies).



Formalin-fixed and paraffin-embedded human cancer tissue reacted with the primary antibody, which was peroxidase-conjugated to the secondary antibody, followed by DAB staining. This data demonstrates the use of this antibody for immunohistochemistry; clinical relevance has not been evaluated. BC = breast carcinoma; HC = hepatocarcinoma.

#### **Jagged 2 (JAG2) Antibody (C-term) - Background**

The Notch signaling pathway is an intercellular signaling mechanism that is essential for proper embryonic development. Members of the Notch gene family encode transmembrane receptors that are critical for various cell fate decisions. JAG2 is one of several ligands that activate Notch and related receptors.

#### **Jagged 2 (JAG2) Antibody (C-term) - References**

Hayashi, T., et al., J. Androl. 22(6):999-1011 (2001).  
Lindner, V., et al., Am. J. Pathol. 159(3):875-883 (2001).  
Cereseto, A., et al., J. Cell. Physiol. 185(3):425-431 (2000).  
Tsai, S., et al., Blood 96(3):950-957 (2000).  
Deng, Y., et al., Genomics 63(1):133-138 (2000).

#### **Jagged 2 (JAG2) Antibody (C-term) - Citations**

- [Matrix Gla protein regulates differentiation of endothelial cells derived from mouse embryonic stem cells.](#)