

**LAF4 Antibody (C-term)**  
**Purified Rabbit Polyclonal Antibody (Pab)**  
**Catalog # AP6149a****Specification**

---

**LAF4 Antibody (C-term) - Product Information**

Application	WB,E
Primary Accession	<a href="#">P51826</a>
Reactivity	Human, Mouse
Host	Rabbit
Clonality	Polyclonal
Isotype	Rabbit IgG
Calculated MW	133503
Antigen Region	1197-1227

**LAF4 Antibody (C-term) - Additional Information****Gene ID** 3899**Other Names**

AF4/FMR2 family member 3, Lymphoid nuclear protein related to AF4, Protein LAF-4, AFF3, LAF4

**Target/Specificity**

This LAF4 antibody is generated from rabbits immunized with a KLH conjugated synthetic peptide between 1197-1227 amino acids from the C-terminal region of human LAF4.

**Dilution**

WB~~1:2000

E~~Use at an assay dependent concentration.

**Format**

Purified polyclonal antibody supplied in PBS with 0.09% (W/V) sodium azide. This antibody is prepared by Saturated Ammonium Sulfate (SAS) precipitation followed by dialysis against PBS.

**Storage**

Maintain refrigerated at 2-8°C for up to 2 weeks. For long term storage store at -20°C in small aliquots to prevent freeze-thaw cycles.

**Precautions**

LAF4 Antibody (C-term) is for research use only and not for use in diagnostic or therapeutic procedures.

**LAF4 Antibody (C-term) - Protein Information****Name** AFF3 {ECO:0000303|PubMed:28397838, ECO:0000312|HGNC:HGNC:6473}**Function** Putative transcription activator that may function in lymphoid development and oncogenesis. Binds, in vitro, to double- stranded DNA.

**Cellular Location**

Nucleus.

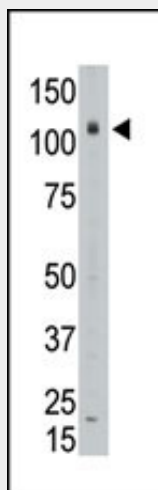
**Tissue Location**

Preferentially expressed in lymphoid tissues, highest levels being found in the thymus

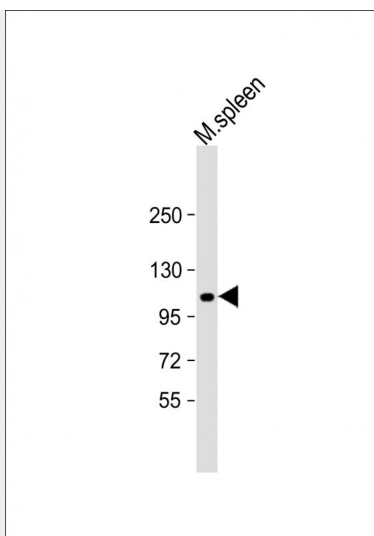
**LAF4 Antibody (C-term) - Protocols**

Provided below are standard protocols that you may find useful for product applications.

- [Western Blot](#)
- [Blocking Peptides](#)
- [Dot Blot](#)
- [Immunohistochemistry](#)
- [Immunofluorescence](#)
- [Immunoprecipitation](#)
- [Flow Cytometry](#)
- [Cell Culture](#)

**LAF4 Antibody (C-term) - Images**

The anti-LAF4 Pab (Cat. #AP6149a) is used in Western blot to detect LAF4 in placenta tissue lysate.



Anti-LAF4 Antibody (C-term) at 1:2000 dilution + mouse spleen lysate Lysates/proteins at 20 µg per lane. Secondary Goat Anti-Rabbit IgG, (H+L), Peroxidase conjugated at 1/10000 dilution. Predicted band size : 133 kDa Blocking/Dilution buffer: 5% NFDM/TBST.

#### **LAF4 Antibody (C-term) - Background**

Lymphoid nuclear protein related to AF4 (LAF4) is related to MLLT2 which is also referred to as AF4. LAF4 is a tissue-restricted nuclear transcriptional activator that is preferentially expressed in lymphoid tissue. Isolation of LAF4 has defined a highly conserved LAF4/MLLT2 gene family of nuclear transcription factors that may function in lymphoid development and oncogenesis.

#### **LAF4 Antibody (C-term) - References**

- Hiwatari, M., et al., *Oncogene* 22(18):2851-2855 (2003).  
von Bergh, A.R., et al., *Genes Chromosomes Cancer* 35(1):92-96 (2002).  
Liao, X., et al., *Mamm. Genome* 7(6):467-468 (1996).  
Ma, C., et al., *Blood* 87(2):734-745 (1996).