

**Anti-Histone H4 (MonoMethyl-R3) Antibody**  
**Rabbit polyclonal antibody to Histone H4 (MonoMethyl-R3)**  
**Catalog # AP61503****Specification**

---

**Anti-Histone H4 (MonoMethyl-R3) Antibody - Product Information**

Application	WB
Primary Accession	<a href="#">P62805</a>
Other Accession	<a href="#">P62806</a>
Reactivity	Human, Mouse, Rat, Pig, Chicken, Bovine
Host	Rabbit
Clonality	Polyclonal
Calculated MW	11367

**Anti-Histone H4 (MonoMethyl-R3) Antibody - Additional Information**

**Gene ID** 121504;554313;8294;8359;8360;8361;8362;8363;8364;8365;8366;8367;8368;8370

**Other Names**

H4/A; H4FA; H4/I; H4FI; H4/G; H4FG; H4/B; H4FB; H4/J; H4FJ; H4/C; H4FC; H4/H; H4FH; H4/M; H4FM; H4/E; H4FE; H4/D; H4FD; H4/K; H4FK; H4/N; H4F2; H4FN; HIST2H4; H4/O; H4FO; Histone H4

**Target/Specificity**

KLH-conjugated synthetic peptide encompassing a sequence within the N-term region of human Histone H4 with a site at MonoMethyl-R3. The exact sequence is proprietary.

**Dilution**

WB~~WB (1/500 - 1/1000)

**Format**

Liquid in 0.42% Potassium phosphate, 0.87% Sodium chloride, pH 7.3, 30% glycerol, and 0.09% (W/V) sodium azide.

**Storage**

Store at -20 °C. Stable for 12 months from date of receipt

**Anti-Histone H4 (MonoMethyl-R3) Antibody - Protein Information**

**Name** H4C1

**Synonyms** H4/A, H4FA, HIST1H4A

**Function**

Core component of nucleosome. Nucleosomes wrap and compact DNA into chromatin, limiting DNA accessibility to the cellular machineries which require DNA as a template. Histones thereby play a central role in transcription regulation, DNA repair, DNA replication and chromosomal stability. DNA accessibility is regulated via a complex set of post-translational modifications of histones, also called histone code, and nucleosome remodeling.

### Cellular Location

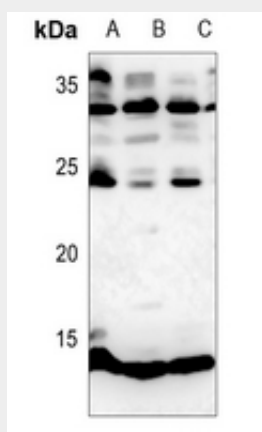
Nucleus {ECO:0000250|UniProtKB:P62806}. Chromosome. Note=Localized to the nucleus when acetylated in step 11 spermatids. {ECO:0000250|UniProtKB:P62806}

### Anti-Histone H4 (MonoMethyl-R3) Antibody - Protocols

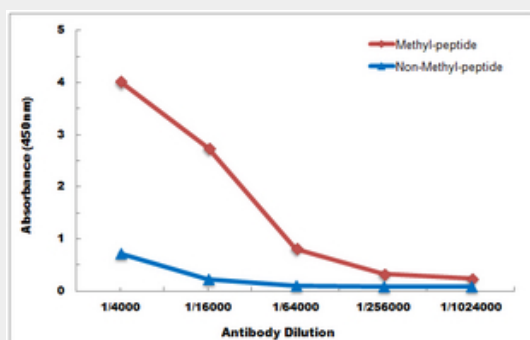
Provided below are standard protocols that you may find useful for product applications.

- [Western Blot](#)
- [Blocking Peptides](#)
- [Dot Blot](#)
- [Immunohistochemistry](#)
- [Immunofluorescence](#)
- [Immunoprecipitation](#)
- [Flow Cytometry](#)
- [Cell Culture](#)

### Anti-Histone H4 (MonoMethyl-R3) Antibody - Images



Western blot analysis of Histone H4 (MonoMethyl-R3) expression in HEK293T (A), A549 (B), U2OS (C) whole cell lysates.



Direct ELISA antibody dose-response curve using Anti-Histone H4 (MonoMethyl-R3) Antibody. Antigen (methyl-peptide and non-methyl-peptide) concentration is 5 ug/ml. Goat Anti-Rabbit IgG (H&L) - HRP was used as the secondary antibody, and signal was developed by TMB substrate.

### Anti-Histone H4 (MonoMethyl-R3) Antibody - Background

KLH-conjugated synthetic peptide encompassing a sequence within the N-term region of human

Histone H4 with a site at MonoMethyl-R3. The exact sequence is proprietary.