

Anti-Aquaporin 3 Antibody
Rabbit polyclonal antibody to Aquaporin 3
Catalog # AP61506**Specification**

Anti-Aquaporin 3 Antibody - Product Information

Application	WB
Primary Accession	Q92482
Other Accession	Q8R2N1
Reactivity	Human, Mouse, Rat, Pig, Bovine
Host	Rabbit
Clonality	Polyclonal
Calculated MW	31544

Anti-Aquaporin 3 Antibody - Additional Information**Gene ID** 360**Other Names**

Aquaporin-3; AQP-3; Aquaglyceroporin-3

Target/Specificity

Recognizes endogenous levels of Aquaporin 3 protein.

Dilution

WB~~WB (1/500 - 1/1000)

Format

Liquid in 0.42% Potassium phosphate, 0.87% Sodium chloride, pH 7.3, 30% glycerol, and 0.09% (W/V) sodium azide.

Storage

Store at -20 °C. Stable for 12 months from date of receipt

Anti-Aquaporin 3 Antibody - Protein Information**Name** AQP3 {ECO:0000303|PubMed:7558005, ECO:0000312|HGNC:HGNC:636}**Function**

Aquaglyceroporins form homotetrameric transmembrane channels, with each monomer independently mediating glycerol and water transport across the plasma membrane along their osmotic gradient (PubMed:12239222, PubMed:30420639). Could also be permeable to urea (By similarity). Also participates in cell permeability to H2O2 and H2O2- mediated signaling (PubMed:20724658). In skin, transports glycerol to the epidermis and stratum corneum, where it maintains hydration, elasticity, and supports lipid biosynthesis for barrier repair (By similarity). In kidney, contributes to the

reabsorption of water, helping the body maintain proper fluid balance (By similarity).

Cellular Location

Cell membrane; Multi-pass membrane protein {ECO:0000250|UniProtKB:O14520}. Basolateral cell membrane {ECO:0000250|UniProtKB:P47862}; Multi-pass membrane protein {ECO:0000250|UniProtKB:O14520}

Tissue Location

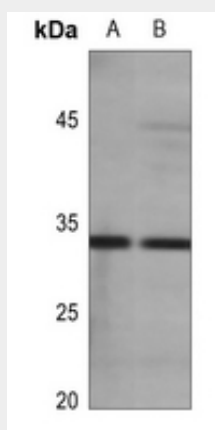
Widely expressed in epithelial cells of kidney (collecting ducts) and airways, in keratinocytes, immature dendritic cells and erythrocytes. Isoform 2 is not detectable in erythrocytes at the protein level

Anti-Aquaporin 3 Antibody - Protocols

Provided below are standard protocols that you may find useful for product applications.

- [Western Blot](#)
- [Blocking Peptides](#)
- [Dot Blot](#)
- [Immunohistochemistry](#)
- [Immunofluorescence](#)
- [Immunoprecipitation](#)
- [Flow Cytometry](#)
- [Cell Culture](#)

Anti-Aquaporin 3 Antibody - Images



Western blot analysis of Aquaporin 3 expression in mouse kidney (A), rat kidney (B) whole cell lysates.

Anti-Aquaporin 3 Antibody - Background

KLH-conjugated synthetic peptide encompassing a sequence within the center region of human Aquaporin 3. The exact sequence is proprietary.