

**Anti-mPR alpha Antibody**  
**Rabbit polyclonal antibody to mPR alpha**  
**Catalog # AP61509****Specification**

---

**Anti-mPR alpha Antibody - Product Information**

Application	WB, IH, IF
Primary Accession	<a href="#">Q86WK9</a>
Other Accession	<a href="#">Q80ZE4</a>
Reactivity	Human, Mouse, Rat
Host	Rabbit
Clonality	Polyclonal
Calculated MW	39719

**Anti-mPR alpha Antibody - Additional Information****Gene ID** 164091**Other Names**

MRPA; Membrane progesterin receptor alpha; mPR alpha; Progesterin and adipoQ receptor family member 7; Progesterin and adipoQ receptor family member VII

**Target/Specificity**

Recognizes endogenous levels of mPR alpha protein.

**Dilution**

WB~~WB (1/500 - 1/1000), IH (1/100 - 1/200), IF/IC (1/100 - 1/500)

IH~~WB (1/500 - 1/1000), IH (1/100 - 1/200), IF/IC (1/100 - 1/500)

IF~~WB (1/500 - 1/1000), IH (1/100 - 1/200), IF/IC (1/100 - 1/500)

**Format**

Liquid in 0.42% Potassium phosphate, 0.87% Sodium chloride, pH 7.3, 30% glycerol, and 0.09% (W/V) sodium azide.

**Storage**

Store at -20 °C. Stable for 12 months from date of receipt

**Anti-mPR alpha Antibody - Protein Information****Name** PAQR7 ([HGNC:23146](#))**Synonyms** MRPA**Function**

Plasma membrane progesterone (P4) receptor coupled to G proteins (PubMed:&lt;a href="http://www.uniprot.org/citations/23763432" target="\_blank"&gt;23763432&lt;/a&gt;). Seems to act through a G(i) mediated pathway (PubMed:&lt;a href="http://www.uniprot.org/citations/23763432" target="\_blank"&gt;23763432&lt;/a&gt;). May be involved in oocyte maturation (PubMed:&lt;a href="http://www.uniprot.org/citations/23763432" target="\_blank"&gt;23763432&lt;/a&gt;).

href="http://www.uniprot.org/citations/12601167" target="\_blank">12601167</a>). Involved in neurosteroid inhibition of apoptosis (PubMed:<a href="http://www.uniprot.org/citations/23161870" target="\_blank">23161870</a>). Also binds dehydroepiandrosterone (DHEA), pregnanolone, pregnenolone and allopregnanolone (PubMed:<a href="http://www.uniprot.org/citations/23161870" target="\_blank">23161870</a>).

#### Cellular Location

Cell membrane; Multi-pass membrane protein

#### Tissue Location

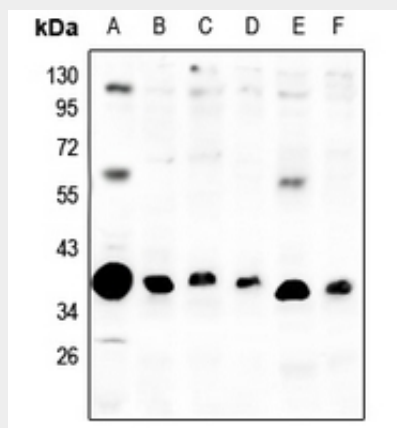
Expressed in a wide range of tissues including ovary, testis, placenta, uterus and bladder

### Anti-mPR alpha Antibody - Protocols

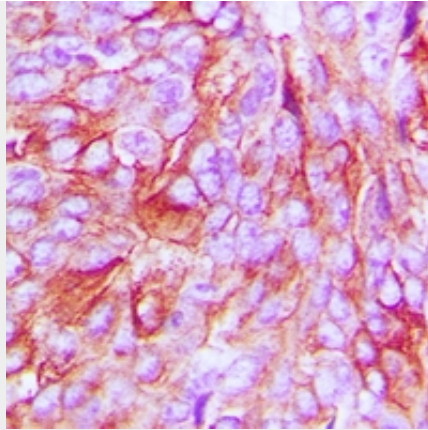
Provided below are standard protocols that you may find useful for product applications.

- [Western Blot](#)
- [Blocking Peptides](#)
- [Dot Blot](#)
- [Immunohistochemistry](#)
- [Immunofluorescence](#)
- [Immunoprecipitation](#)
- [Flow Cytometry](#)
- [Cell Culture](#)

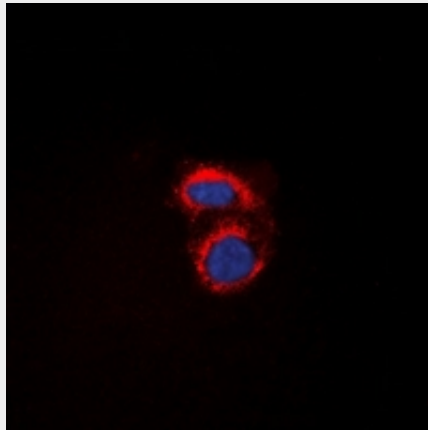
### Anti-mPR alpha Antibody - Images



Western blot analysis of mPR alpha expression in Hela (A), SGC7901 (B), HCT116 (C), U87MG (D), C6 (E), CT26 (F) whole cell lysates.



Immunohistochemical analysis of mPR alpha staining in human breast cancer formalin fixed paraffin embedded tissue section. The section was pre-treated using heat mediated antigen retrieval with sodium citrate buffer (pH 6.0). The section was then incubated with the antibody at room temperature and detected using an HRP conjugated compact polymer system. DAB was used as the chromogen. The section was then counterstained with haematoxylin and mounted with DPX.



Immunofluorescent analysis of mPR alpha staining in A549 cells. Formalin-fixed cells were permeabilized with 0.1% Triton X-100 in TBS for 5-10 minutes and blocked with 3% BSA-PBS for 30 minutes at room temperature. Cells were probed with the primary antibody in 3% BSA-PBS and incubated overnight at 4 °C in a humidified chamber. Cells were washed with PBST and incubated with a DyLight 594-conjugated secondary antibody (red) in PBS at room temperature in the dark. DAPI was used to stain the cell nuclei (blue).

#### **Anti-mPR alpha Antibody - Background**

KLH-conjugated synthetic peptide encompassing a sequence within the C-term region of human mPR alpha. The exact sequence is proprietary.