

**Anti-MYPT1 Antibody**  
Rabbit polyclonal antibody to MYPT1  
Catalog # AP61515

**Specification**

---

**Anti-MYPT1 Antibody - Product Information**

Application	WB, IHC
Primary Accession	<a href="#">O14974</a>
Other Accession	<a href="#">Q9DBR7</a>
Reactivity	Human, Mouse, Rat, Zebrafish, Chicken
Host	Rabbit
Clonality	Polyclonal
Calculated MW	115281

**Anti-MYPT1 Antibody - Additional Information**

Gene ID 4659

**Other Names**

MBS; MYPT1; Protein phosphatase 1 regulatory subunit 12A; Myosin phosphatase-targeting subunit 1; Myosin phosphatase target subunit 1; Protein phosphatase myosin-binding subunit

**Target/Specificity**

KLH-conjugated synthetic peptide encompassing a sequence within the center region of human MYPT1. The exact sequence is proprietary.

**Dilution**

WB~~WB (1/500 - 1/1000), IH (1/100 - 1/200)  
IHC~~1:100~500

**Format**

Liquid in 0.42% Potassium phosphate, 0.87% Sodium chloride, pH 7.3, 30% glycerol, and 0.09% (W/V) sodium azide.

**Storage**

Store at -20 °C. Stable for 12 months from date of receipt

**Anti-MYPT1 Antibody - Protein Information**

Name PPP1R12A ([HGNC:7618](#))

**Function**

Key regulator of protein phosphatase 1C (PPP1C). Mediates binding to myosin. As part of the PPP1C complex, involved in dephosphorylation of PLK1. Capable of inhibiting HIF1AN-dependent suppression of HIF1A activity.

**Cellular Location**

Cytoplasm. Cytoplasm, cytoskeleton, stress fiber. Note=Also along actomyosin filaments

### Tissue Location

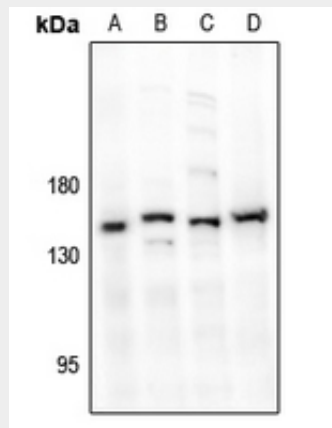
Expressed in striated muscles, specifically in type 2a fibers (at protein level).

### Anti-MYPT1 Antibody - Protocols

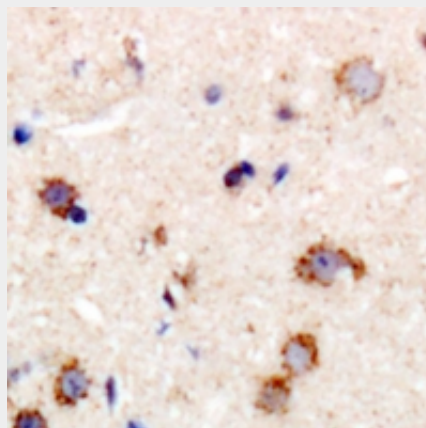
Provided below are standard protocols that you may find useful for product applications.

- [Western Blot](#)
- [Blocking Peptides](#)
- [Dot Blot](#)
- [Immunohistochemistry](#)
- [Immunofluorescence](#)
- [Immunoprecipitation](#)
- [Flow Cytometry](#)
- [Cell Culture](#)

### Anti-MYPT1 Antibody - Images



Western blot analysis of MYPT1 expression in HEK293T (A), A2780 (B), C6 (C), SP20 (D) whole cell lysates.



Immunohistochemical analysis of MYPT1 staining in human brain formalin fixed paraffin embedded tissue section. The section was pre-treated using heat mediated antigen retrieval with sodium citrate buffer (pH 6.0). The section was then incubated with the antibody at room temperature and detected using an HRP conjugated compact polymer system. DAB was used as the chromogen. The section was then counterstained with haematoxylin and mounted with DPX.

**Anti-MYPT1 Antibody - Background**

KLH-conjugated synthetic peptide encompassing a sequence within the center region of human MYPT1. The exact sequence is proprietary.