

Anti-VEGFA Antibody
Rabbit polyclonal antibody to VEGFA
Catalog # AP61525**Specification**

Anti-VEGFA Antibody - Product Information

Application	WB, IHC
Primary Accession	P15692
Other Accession	Q00731
Reactivity	Human, Mouse, Rat
Host	Rabbit
Clonality	Polyclonal
Calculated MW	43597

Anti-VEGFA Antibody - Additional Information**Gene ID** 7422**Other Names**

VEGF; Vascular endothelial growth factor A; VEGF-A; Vascular permeability factor; VPF

Target/Specificity

Recognizes endogenous levels of VEGFA protein.

Dilution

WB~~WB (1/500 - 1/1000), IH (1/50 - 1/200)

IHC~~1:100~500

Format

Liquid in 0.42% Potassium phosphate, 0.87% Sodium chloride, pH 7.3, 30% glycerol, and 0.09% (W/V) sodium azide.

Storage

Store at -20 °C. Stable for 12 months from date of receipt

Anti-VEGFA Antibody - Protein Information**Name** VEGFA**Synonyms** VEGF**Function**

[N-VEGF]: Participates in the induction of key genes involved in the response to hypoxia and in the induction of angiogenesis such as HIF1A (PubMed:35455969). Involved in protecting cells from hypoxia- mediated cell death (By similarity).

Cellular Location

[N-VEGF]: Cytoplasm. Nucleus. Note=Cytoplasmic in normoxic conditions and localizes to the nucleus under hypoxic conditions [Isoform L-VEGF189]: Endoplasmic reticulum. Golgi apparatus. Secreted, extracellular space, extracellular matrix [Isoform VEGF165]: Secreted

Tissue Location

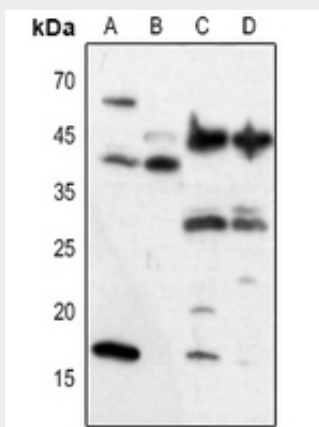
Higher expression in pituitary tumors than the pituitary gland. [Isoform VEGF165]: Widely expressed. [Isoform VEGF206]: Not widely expressed.

Anti-VEGFA Antibody - Protocols

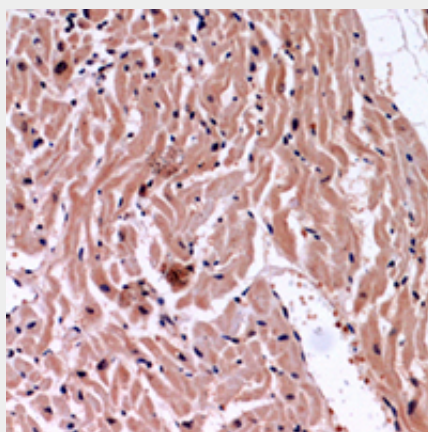
Provided below are standard protocols that you may find useful for product applications.

- [Western Blot](#)
- [Blocking Peptides](#)
- [Dot Blot](#)
- [Immunohistochemistry](#)
- [Immunofluorescence](#)
- [Immunoprecipitation](#)
- [Flow Cytometry](#)
- [Cell Culture](#)

Anti-VEGFA Antibody - Images



Western blot analysis of VEGFA expression in Hela (A), A549 (B), mouse liver (C), rat liver (D) whole cell lysates.



Immunohistochemical analysis of VEGFA staining in human heart formalin fixed paraffin embedded tissue section. The section was pre-treated using heat mediated antigen retrieval with sodium citrate buffer (pH 6.0). The section was then incubated with the antibody at room temperature and detected using an HRP conjugated compact polymer system. DAB was used as the chromogen. The section was then counterstained with haematoxylin and mounted with DPX.

Anti-VEGFA Antibody - Background

KLH-conjugated synthetic peptide encompassing a sequence within the center region of human VEGFA. The exact sequence is proprietary.