

Anti-FOG2 Antibody
Rabbit polyclonal antibody to FOG2
Catalog # AP61530**Specification**

Anti-FOG2 Antibody - Product Information

Application	WB, IH
Primary Accession	Q8WW38
Reactivity	Human
Host	Rabbit
Clonality	Polyclonal
Calculated MW	128159

Anti-FOG2 Antibody - Additional Information**Gene ID** 23414**Other Names**

FOG2; ZNF89B; Zinc finger protein ZFPM2; Friend of GATA protein 2; FOG-2; Friend of GATA 2; hFOG-2; Zinc finger protein 89B; Zinc finger protein multitype 2

Target/Specificity

Recognizes endogenous levels of FOG2 protein.

Dilution

WB~~WB (1/500 - 1/1000), IH (1/100 - 1/200)

IH~~WB (1/500 - 1/1000), IH (1/100 - 1/200)

Format

Liquid in 0.42% Potassium phosphate, 0.87% Sodium chloride, pH 7.3, 30% glycerol, and 0.09% (W/V) sodium azide.

Storage

Store at -20 °C. Stable for 12 months from date of receipt

Anti-FOG2 Antibody - Protein Information**Name** ZFPM2**Synonyms** FOG2, ZNF89B**Function**

Transcription regulator that plays a central role in heart morphogenesis and development of coronary vessels from epicardium, by regulating genes that are essential during cardiogenesis. Essential cofactor that acts via the formation of a heterodimer with transcription factors of the GATA family GATA4, GATA5 and GATA6. Such heterodimer can both activate or repress transcriptional activity, depending on the cell and promoter context. Also required in gonadal differentiation, possibly by regulating expression of SRY. Probably acts as a corepressor of NR2F2 (By

similarity).

Cellular Location

Nucleus.

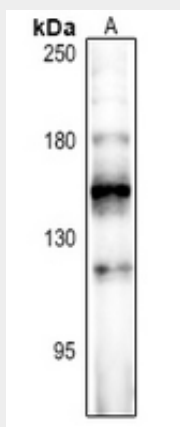
Tissue Location

Widely expressed at low level.

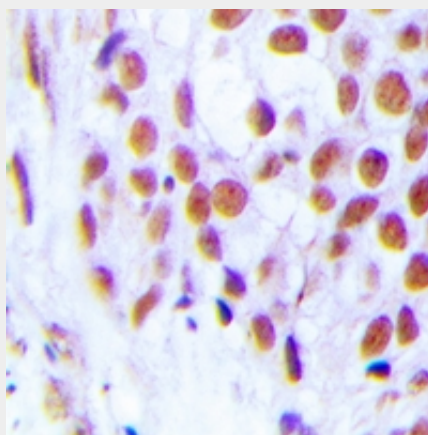
Anti-FOG2 Antibody - Protocols

Provided below are standard protocols that you may find useful for product applications.

- [Western Blot](#)
- [Blocking Peptides](#)
- [Dot Blot](#)
- [Immunohistochemistry](#)
- [Immunofluorescence](#)
- [Immunoprecipitation](#)
- [Flow Cytometry](#)
- [Cell Culture](#)

Anti-FOG2 Antibody - Images

Western blot analysis of FOG2 expression in Beas2B (A) whole cell lysates.



Immunohistochemical analysis of FOG2 staining in human breast cancer formalin fixed paraffin

embedded tissue section. The section was pre-treated using heat mediated antigen retrieval with sodium citrate buffer (pH 6.0). The section was then incubated with the antibody at room temperature and detected using an HRP conjugated compact polymer system. DAB was used as the chromogen. The section was then counterstained with haematoxylin and mounted with DPX.

Anti-FOG2 Antibody - Background

KLH-conjugated synthetic peptide encompassing a sequence within the center region of human FOG2. The exact sequence is proprietary.