

Anti-GPR87 Antibody
Rabbit polyclonal antibody to GPR87
Catalog # AP61532**Specification**

Anti-GPR87 Antibody - Product Information

Application	WB, IF/IC
Primary Accession	Q9BY21
Other Accession	Q99MT7
Reactivity	Human, Mouse
Host	Rabbit
Clonality	Polyclonal
Calculated MW	41436

Anti-GPR87 Antibody - Additional Information**Gene ID** 53836**Other Names**

GPR95; G-protein coupled receptor 87; G-protein coupled receptor 95

Target/Specificity

Recognizes endogenous levels of GPR87 protein.

Dilution

WB~~WB (1/500 - 1/1000), IF/IC (1/100 - 1/500)

IF/IC~~N/A

Format

Liquid in 0.42% Potassium phosphate, 0.87% Sodium chloride, pH 7.3, 30% glycerol, and 0.09% (W/V) sodium azide.

Storage

Store at -20 °C. Stable for 12 months from date of receipt

Anti-GPR87 Antibody - Protein Information**Name** GPR87**Synonyms** GPR95**Function**

Receptor for lysophosphatidic acid (LPA) (PubMed:17905198). Necessary for p53/TP53-dependent survival in response to DNA damage (PubMed:19602589). Promotes the Hippo-YAP signaling pathway and thereby modulates glycolysis and oxidative stress production by the regulation of hexokinase-2/HK2 (PubMed:35843477).

target="_blank">35843477).

Cellular Location

Cell membrane; Multi-pass membrane protein

Tissue Location

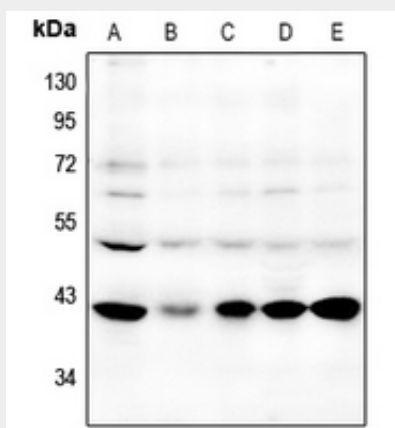
Expressed in placenta and prostate. Weaker expression in thymus. Not expressed in thalamus, hippocampus, pons or cerebellum. Overexpressed in squamous cell carcinoma of the lung

Anti-GPR87 Antibody - Protocols

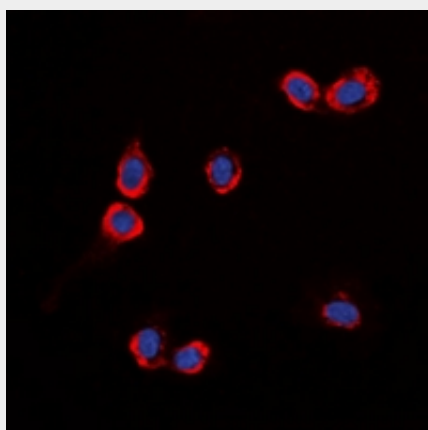
Provided below are standard protocols that you may find useful for product applications.

- [Western Blot](#)
- [Blocking Peptides](#)
- [Dot Blot](#)
- [Immunohistochemistry](#)
- [Immunofluorescence](#)
- [Immunoprecipitation](#)
- [Flow Cytometry](#)
- [Cell Culture](#)

Anti-GPR87 Antibody - Images



Western blot analysis of GPR87 expression in Myla2059 (A), PC3 (B), A549 (C), DLD (D), HepG2 (E) whole cell lysates.



Immunofluorescent analysis of GPR87 staining in HuvEc cells. Formalin-fixed cells were permeabilized with 0.1% Triton X-100 in TBS for 5-10 minutes and blocked with 3% BSA-PBS for 30 minutes at room temperature. Cells were probed with the primary antibody in 3% BSA-PBS and incubated overnight at 4 °C in a humidified chamber. Cells were washed with PBST and incubated with a DyLight 594-conjugated secondary antibody (red) in PBS at room temperature in the dark. DAPI was used to stain the cell nuclei (blue).

Anti-GPR87 Antibody - Background

KLH-conjugated synthetic peptide encompassing a sequence within the center region of human GPR87. The exact sequence is proprietary.