

Anti-GPR170 Antibody
Rabbit polyclonal antibody to GPR170
Catalog # AP61534**Specification**

Anti-GPR170 Antibody - Product Information

Application	WB, IF/IC, IHC
Primary Accession	Q8TDS5
Reactivity	Human, Mouse
Host	Rabbit
Clonality	Polyclonal
Calculated MW	41426

Anti-GPR170 Antibody - Additional Information**Gene ID** 165140**Other Names**

GPR170; TG1019; Oxoeicosanoid receptor 1; 5-oxo-ETE G-protein coupled receptor; G-protein coupled receptor 170; G-protein coupled receptor R527; G-protein coupled receptor TG1019

Target/Specificity

Recognizes endogenous levels of GPR170 protein.

Dilution

WB~~WB (1/500 - 1/1000), IH (1/100 - 1/200), IF/IC (1/100 - 1/500)

IF/IC~~N/A

IHC~~1:100~500

Format

Liquid in 0.42% Potassium phosphate, 0.87% Sodium chloride, pH 7.3, 30% glycerol, and 0.09% (W/V) sodium azide.

Storage

Store at -20 °C. Stable for 12 months from date of receipt

Anti-GPR170 Antibody - Protein Information**Name** OXER1**Synonyms** GPR170, TG1019**Function**

Receptor for eicosanoids and polyunsaturated fatty acids such as 5-oxo-6E,8Z,11Z,14Z-eicosatetraenoic acid (5-OXO-ETE), 5(S)-hydroperoxy-6E,8Z,11Z,14Z-eicosatetraenoic acid (5(S)-HPETE) and arachidonic acid. Seems to be coupled to the G(i)/G(o), families of heteromeric G proteins.

Cellular Location

Membrane; Multi-pass membrane protein

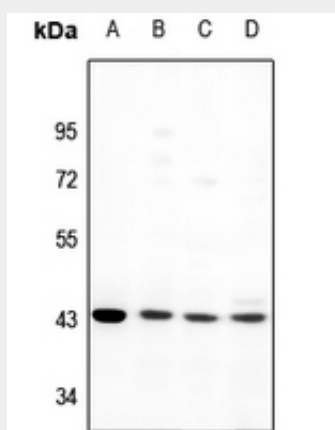
Tissue Location

Expressed in various tissues except brain. Expression is more intense in liver, kidney, peripheral leukocyte, lung, and spleen than in other tissues. Highly expressed in eosinophils, neutrophils, and lung macrophages

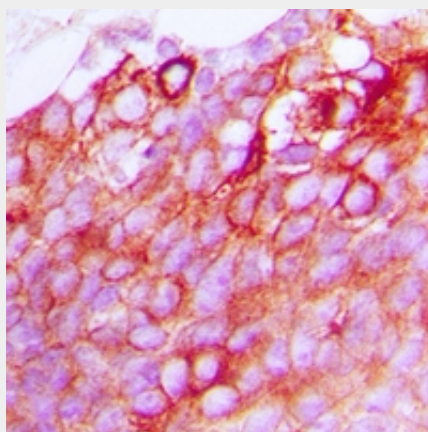
Anti-GPR170 Antibody - Protocols

Provided below are standard protocols that you may find useful for product applications.

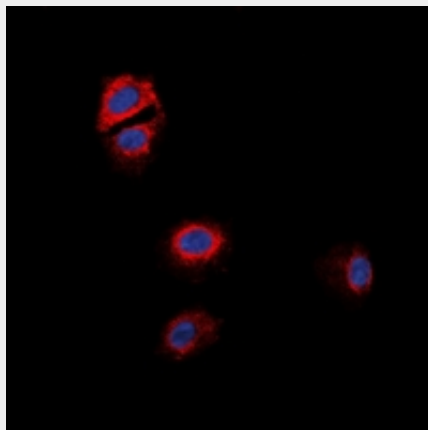
- [Western Blot](#)
- [Blocking Peptides](#)
- [Dot Blot](#)
- [Immunohistochemistry](#)
- [Immunofluorescence](#)
- [Immunoprecipitation](#)
- [Flow Cytometry](#)
- [Cell Culture](#)

Anti-GPR170 Antibody - Images

Western blot analysis of GPR170 expression in LOVO (A), SGC7901 (B), Panc1 (C), LO2 (D) whole cell lysates.



Immunohistochemical analysis of GPR170 staining in human breast cancer formalin fixed paraffin embedded tissue section. The section was pre-treated using heat mediated antigen retrieval with sodium citrate buffer (pH 6.0). The section was then incubated with the antibody at room temperature and detected using an HRP conjugated compact polymer system. DAB was used as the chromogen. The section was then counterstained with haematoxylin and mounted with DPX.



Immunofluorescent analysis of GPR170 staining in MCF7 cells. Formalin-fixed cells were permeabilized with 0.1% Triton X-100 in TBS for 5-10 minutes and blocked with 3% BSA-PBS for 30 minutes at room temperature. Cells were probed with the primary antibody in 3% BSA-PBS and incubated overnight at 4 °C in a humidified chamber. Cells were washed with PBST and incubated with a DyLight 594-conjugated secondary antibody (red) in PBS at room temperature in the dark. DAPI was used to stain the cell nuclei (blue).

Anti-GPR170 Antibody - Background

KLH-conjugated synthetic peptide encompassing a sequence within the center region of human GPR170. The exact sequence is proprietary.