

Anti-GATA5 Antibody
Rabbit polyclonal antibody to GATA5
Catalog # AP61536**Specification**

Anti-GATA5 Antibody - Product Information

Application	WB, IHC
Primary Accession	O9BWX5
Other Accession	P97489
Reactivity	Human, Mouse, Chicken, Bovine
Host	Rabbit
Clonality	Polyclonal
Calculated MW	41299

Anti-GATA5 Antibody - Additional Information**Gene ID** 140628**Other Names**

Transcription factor GATA-5; GATA-binding factor 5

Target/Specificity

Recognizes endogenous levels of GATA5 protein.

Dilution

WB~~WB (1/500 - 1/1000), IH (1/100 - 1/200)

IHC~~1:100~500

Format

Liquid in 0.42% Potassium phosphate, 0.87% Sodium chloride, pH 7.3, 30% glycerol, and 0.09% (W/V) sodium azide.

Storage

Store at -20 °C. Stable for 12 months from date of receipt

Anti-GATA5 Antibody - Protein Information**Name** GATA5 ([HGNC:15802](#))**Function**

Transcription factor required during cardiovascular development (PubMed:23289003). Plays an important role in the transcriptional program(s) that underlies smooth muscle cell diversity (By similarity). Binds to the functionally important CEF-1 nuclear protein binding site in the cardiac-specific slow/cardiac troponin C transcriptional enhancer (PubMed:25543888).

Cellular Location

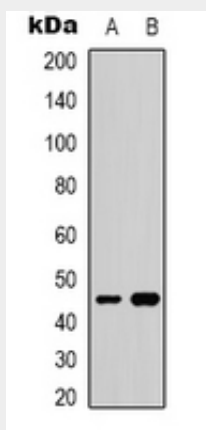
Nucleus.

Anti-GATA5 Antibody - Protocols

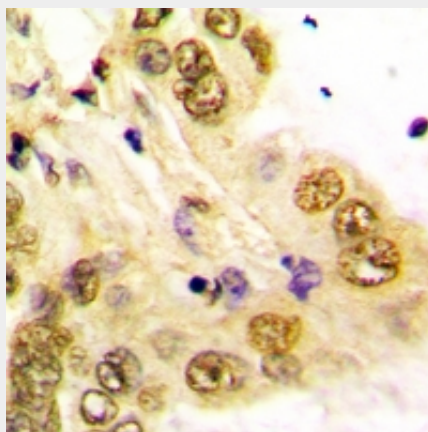
Provided below are standard protocols that you may find useful for product applications.

- [Western Blot](#)
- [Blocking Peptides](#)
- [Dot Blot](#)
- [Immunohistochemistry](#)
- [Immunofluorescence](#)
- [Immunoprecipitation](#)
- [Flow Cytometry](#)
- [Cell Culture](#)

Anti-GATA5 Antibody - Images



Western blot analysis of GATA5 expression in HepG2 (A), NIH3T3 (B) whole cell lysates.



Immunohistochemical analysis of GATA5 staining in human lung cancer formalin fixed paraffin embedded tissue section. The section was pre-treated using heat mediated antigen retrieval with sodium citrate buffer (pH 6.0). The section was then incubated with the antibody at room temperature and detected using an HRP conjugated compact polymer system. DAB was used as the chromogen. The section was then counterstained with haematoxylin and mounted with DPX.

Anti-GATA5 Antibody - Background

KLH-conjugated synthetic peptide encompassing a sequence within the center region of human GATA5. The exact sequence is proprietary.