

Anti-ABCB5 Antibody
Mouse monoclonal antibody to ABCB5
Catalog # AP61564**Specification**

Anti-ABCB5 Antibody - Product Information

Application	WB, IHC
Primary Accession	Q2M3G0
Reactivity	Human
Host	Mouse
Clonality	Monoclonal
Calculated MW	138641

Anti-ABCB5 Antibody - Additional Information**Gene ID** 340273**Other Names**

ATP-binding cassette sub-family B member 5; ABCB5 P-gp; P-glycoprotein ABCB5

Target/Specificity

KLH-conjugated synthetic peptide encompassing a sequence of human ABCB5. The exact sequence is proprietary.

Dilution

WB~~WB (1/1000 - 1/2000), IH (1/200 - 1/500)

IHC~~1:100~500

Format

Liquid in 0.42% Potassium phosphate, 0.87% Sodium chloride, pH 7.3, 30% glycerol, and 0.09% (W/V) sodium azide.

Storage

Store at -20 °C. Stable for 12 months from date of receipt

Anti-ABCB5 Antibody - Protein Information**Name** ABCB5 ([HGNC:46](#))**Function**

Energy-dependent efflux transporter responsible for decreased drug accumulation in multidrug-resistant cells (PubMed: [12960149](http://www.uniprot.org/citations/12960149) target="_blank">12960149, PubMed: [15205344](http://www.uniprot.org/citations/15205344) target="_blank">15205344, PubMed: [15899824](http://www.uniprot.org/citations/15899824) target="_blank">15899824, PubMed: [22306008](http://www.uniprot.org/citations/22306008) target="_blank">22306008). Specifically present in limbal stem cells, where it plays a key role in corneal development and repair (By similarity).

Cellular Location

Cell membrane; Multi-pass membrane protein {ECO:0000255|PROSITE-ProRule:PRU00441, ECO:0000269|PubMed:12960149}

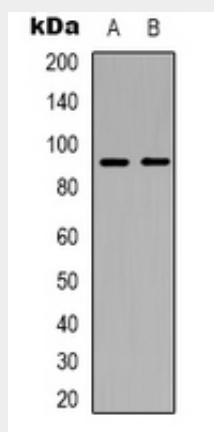
Tissue Location

Expressed by CD133-expressing progenitor cells among epidermal melanocytes (at protein level). Widely expressed with specific expression in pigment cells. Highly expressed in several malignant tissues: highly expressed in clinical melanomas, with low expression in normal skin. In melanoma, marks malignant melanoma- initiating cells (MMIC), in which clinical virulence resides as a consequence of unlimited self-renewal capacity, resulting in inexorable tumor progression and metastasis. Also highly expressed in a number of leukemia cells. Expressed in basal limbal epithelium

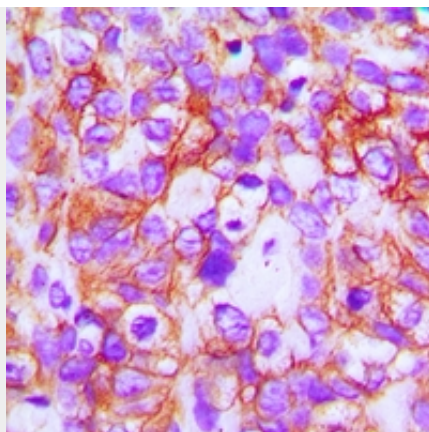
Anti-ABCB5 Antibody - Protocols

Provided below are standard protocols that you may find useful for product applications.

- [Western Blot](#)
- [Blocking Peptides](#)
- [Dot Blot](#)
- [Immunohistochemistry](#)
- [Immunofluorescence](#)
- [Immunoprecipitation](#)
- [Flow Cytometry](#)
- [Cell Culture](#)

Anti-ABCB5 Antibody - Images

Western blot analysis of ABCB5 expression in Hela (A), 293T (B) whole cell lysates.



Immunohistochemical analysis of ABCB5 staining in human breast cancer formalin fixed paraffin embedded tissue section. The section was pre-treated using heat mediated antigen retrieval with sodium citrate buffer (pH 6.0). The section was then incubated with the antibody at room temperature and detected using an HRP conjugated compact polymer system. DAB was used as the chromogen. The section was then counterstained with haematoxylin and mounted with DPX.

Anti-ABCB5 Antibody - Background

KLH-conjugated synthetic peptide encompassing a sequence of human ABCB5. The exact sequence is proprietary.