

Anti-Alpha-tubulin (AcK40) Antibody
Mouse monoclonal antibody to Alpha-tubulin (AcK40)
Catalog # AP61568**Specification**

Anti-Alpha-tubulin (AcK40) Antibody - Product Information

Application	WB, IHC
Primary Accession	P68363
Reactivity	Human, Mouse, Rat
Host	Mouse
Clonality	Monoclonal
Calculated MW	50152

Anti-Alpha-tubulin (AcK40) Antibody - Additional Information**Gene ID** 10376**Other Names**

Tubulin alpha-1B chain; Alpha-tubulin ubiquitous; Tubulin K-alpha-1; Tubulin alpha-ubiquitous chain

Target/Specificity

KLH-conjugated synthetic peptide encompassing a sequence of human Alpha-tubulin. The exact sequence is proprietary.

Dilution

WB~~WB (1/1000 - 1/2000), IH (1/100 - 1/200)

IHC~~1:100~500

Format

Liquid in 0.42% Potassium phosphate, 0.87% Sodium chloride, pH 7.3, 30% glycerol, and 0.09% (W/V) sodium azide.

Storage

Store at -20 °C. Stable for 12 months from date of receipt

Anti-Alpha-tubulin (AcK40) Antibody - Protein Information**Name** TUBA1B**Function**

Tubulin is the major constituent of microtubules, protein filaments consisting of alpha- and beta-tubulin heterodimers (PubMed: [38305685](http://www.uniprot.org/citations/38305685), PubMed: [34996871](http://www.uniprot.org/citations/34996871), PubMed: [38609661](http://www.uniprot.org/citations/38609661)). Microtubules grow by the addition of GTP-tubulin dimers to the microtubule end, where a stabilizing cap forms (PubMed: [38305685](http://www.uniprot.org/citations/38305685), PubMed: [38305685](http://www.uniprot.org/citations/38305685), PubMed: [38305685](http://www.uniprot.org/citations/38305685)).

href="http://www.uniprot.org/citations/34996871" target="_blank">34996871, PubMed:38609661). Below the cap, tubulin dimers are in GDP-bound state, owing to GTPase activity of alpha-tubulin (PubMed:34996871, PubMed:38609661).

Cellular Location

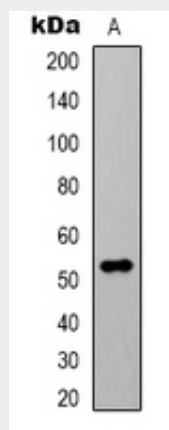
Cytoplasm, cytoskeleton

Anti-Alpha-tubulin (AcK40) Antibody - Protocols

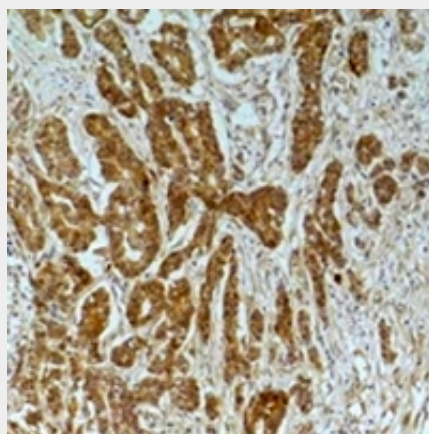
Provided below are standard protocols that you may find useful for product applications.

- [Western Blot](#)
- [Blocking Peptides](#)
- [Dot Blot](#)
- [Immunohistochemistry](#)
- [Immunofluorescence](#)
- [Immunoprecipitation](#)
- [Flow Cytometry](#)
- [Cell Culture](#)

Anti-Alpha-tubulin (AcK40) Antibody - Images



Western blot analysis of Alpha-tubulin (AcK40) expression in HeLa (A) whole cell lysates.



Immunohistochemical analysis of Alpha-tubulin (AcK40) staining in human breast cancer, mouse brain formalin fixed paraffin embedded tissue section. The section was pre-treated using heat mediated antigen retrieval with sodium citrate buffer (pH 6.0). The section was then incubated with the antibody at room temperature and detected using an HRP conjugated compact polymer system. DAB was used as the chromogen. The section was then counterstained with haematoxylin and mounted with DPX.

Anti-Alpha-tubulin (AcK40) Antibody - Background

KLH-conjugated synthetic peptide encompassing a sequence of human Alpha-tubulin. The exact sequence is proprietary.