

Anti-Cyclophilin B Antibody
Mouse monoclonal antibody to Cyclophilin B
Catalog # AP61577**Specification**

Anti-Cyclophilin B Antibody - Product Information

Application	WB, IHC
Primary Accession	P23284
Reactivity	Human, Mouse, Rat
Host	Mouse
Clonality	Monoclonal
Calculated MW	23743

Anti-Cyclophilin B Antibody - Additional Information**Gene ID** 5479**Other Names**CYPB; Peptidyl-prolyl cis-trans isomerase B; PPlase B; CYP-S1; Cyclophilin B; Rotamase B;
S-cyclophilin; SCYLP**Target/Specificity**

KLH-conjugated synthetic peptide encompassing a sequence of human Cyclophilin B. The exact sequence is proprietary.

DilutionWB~~WB (1/1000 - 1/2000), IH (1/100 - 1/200)
IHC~~1:100~500**Format**

Liquid in 0.42% Potassium phosphate, 0.87% Sodium chloride, pH 7.3, 30% glycerol, and 0.09% (W/V) sodium azide.

Storage

Store at -20 °C.Stable for 12 months from date of receipt

Anti-Cyclophilin B Antibody - Protein Information**Name** PPIB**Synonyms** CYPB**Function**

PPlase that catalyzes the cis-trans isomerization of proline imidic peptide bonds in oligopeptides and may therefore assist protein folding.

Cellular Location

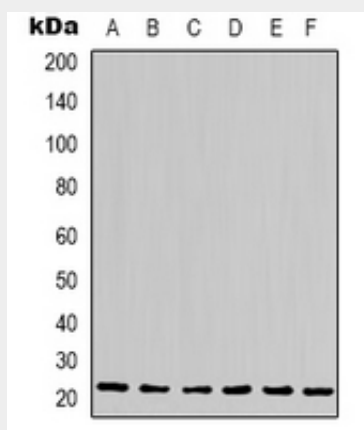
Virion. Note=(Microbial infection)

Anti-Cyclophilin B Antibody - Protocols

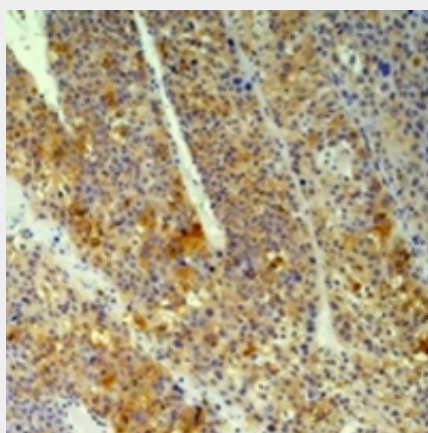
Provided below are standard protocols that you may find useful for product applications.

- [Western Blot](#)
- [Blocking Peptides](#)
- [Dot Blot](#)
- [Immunohistochemistry](#)
- [Immunofluorescence](#)
- [Immunoprecipitation](#)
- [Flow Cytometry](#)
- [Cell Culture](#)

Anti-Cyclophilin B Antibody - Images



Western blot analysis of Cyclophilin B expression in Hela (A), Jurkat (B), 293T (C), HepG2 (D), NIH3T3 (E), rat liver (F) whole cell lysates.



Immunohistochemical analysis of Cyclophilin B staining in human hepatocellular carcinoma, human pancreatic cancer formalin fixed paraffin embedded tissue section. The section was pre-treated using heat mediated antigen retrieval with sodium citrate buffer (pH 6.0). The section was then incubated with the antibody at room temperature and detected using an HRP conjugated compact polymer system. DAB was used as the chromogen. The section was then counterstained with haematoxylin and mounted with DPX.

Anti-Cyclophilin B Antibody - Background

KLH-conjugated synthetic peptide encompassing a sequence of human Cyclophilin B. The exact sequence is proprietary.