

Anti-ERCC1 Antibody
Mouse monoclonal antibody to ERCC1
Catalog # AP61579**Specification**

Anti-ERCC1 Antibody - Product Information

Application	WB, IHC
Primary Accession	P07992
Reactivity	Human
Host	Mouse
Clonality	Monoclonal
Calculated MW	32562

Anti-ERCC1 Antibody - Additional Information**Gene ID** 2067**Other Names**

DNA excision repair protein ERCC-1

Target/Specificity

Recognizes endogenous levels of ERCC1 protein.

Dilution

WB~~WB (1/1000 - 1/2000), IH (1/100 - 1/200)

IHC~~1:100~500

Format

Liquid in 0.42% Potassium phosphate, 0.87% Sodium chloride, pH 7.3, 30% glycerol, and 0.09% (W/V) sodium azide.

Storage

Store at -20 °C.Stable for 12 months from date of receipt

Anti-ERCC1 Antibody - Protein Information**Name** ERCC1**Function**

[Isoform 1]: Non-catalytic component of a structure-specific DNA repair endonuclease responsible for the 5'-incision during DNA repair. Responsible, in conjunction with SLX4, for the first step in the repair of interstrand cross-links (ICL). Participates in the processing of anaphase bridge-generating DNA structures, which consist in incompletely processed DNA lesions arising during S or G2 phase, and can result in cytokinesis failure. Also required for homology-directed repair (HDR) of DNA double-strand breaks, in conjunction with SLX4.

Cellular Location

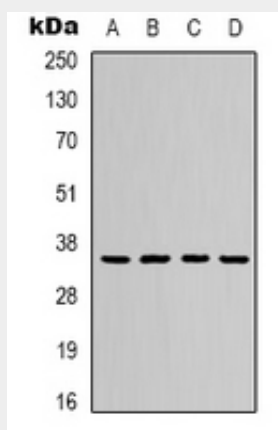
[Isoform 1]: Nucleus [Isoform 3]: Nucleus

Anti-ERCC1 Antibody - Protocols

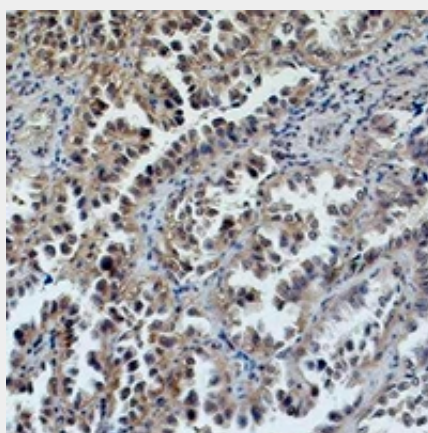
Provided below are standard protocols that you may find useful for product applications.

- [Western Blot](#)
- [Blocking Peptides](#)
- [Dot Blot](#)
- [Immunohistochemistry](#)
- [Immunofluorescence](#)
- [Immunoprecipitation](#)
- [Flow Cytometry](#)
- [Cell Culture](#)

Anti-ERCC1 Antibody - Images



Western blot analysis of ERCC1 expression in Hela (A), HepG2 (B), 293T (C), Jurkat (D) whole cell lysates.



Immunohistochemical analysis of ERCC1 staining in human lung cancer formalin fixed paraffin embedded tissue section. The section was pre-treated using heat mediated antigen retrieval with sodium citrate buffer (pH 6.0). The section was then incubated with the antibody at room temperature and detected using an HRP conjugated compact polymer system. DAB was used as the chromogen. The section was then counterstained with haematoxylin and mounted with DPX.

Anti-ERCC1 Antibody - Background

KLH-conjugated synthetic peptide encompassing a sequence of human ERCC1. The exact sequence

is proprietary.