

Anti-Fumarase Antibody
Mouse monoclonal antibody to Fumarase
Catalog # AP61580**Specification**

Anti-Fumarase Antibody - Product Information

Application	WB, IF/IC
Primary Accession	P07954
Other Accession	P97807
Reactivity	Human, Mouse, Rat
Host	Mouse
Clonality	Monoclonal
Calculated MW	54637

Anti-Fumarase Antibody - Additional Information**Gene ID** 2271**Other Names**

Fumarate hydratase mitochondrial; Fumarase

Target/Specificity

KLH-conjugated synthetic peptide encompassing a sequence of human Fumarase. The exact sequence is proprietary.

Dilution

WB~~WB (1/1000 - 1/3000), IF/IC (1/100 - 1/200)

IF/IC~~N/A

Format

Liquid in 0.42% Potassium phosphate, 0.87% Sodium chloride, pH 7.3, 30% glycerol, and 0.09% (W/V) sodium azide.

Storage

Store at -20 °C. Stable for 12 months from date of receipt

Anti-Fumarase Antibody - Protein Information**Name** FH {ECO:0000303|PubMed:27037871, ECO:0000312|HGNC:HGNC:3700}**Function**

Catalyzes the reversible stereospecific interconversion of fumarate to L-malate (PubMed:30761759). Experiments in other species have demonstrated that specific isoforms of this protein act in defined pathways and favor one direction over the other (Probable).

Cellular Location

[Isoform Mitochondrial]: Mitochondrion

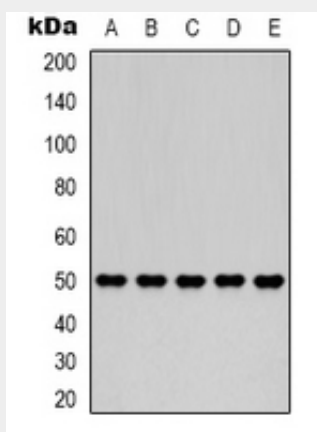
Tissue Location

Expressed in red blood cells; underexpressed in red blood cells (cytoplasm) of patients with hereditary non-spherocytic hemolytic anemia of unknown etiology.

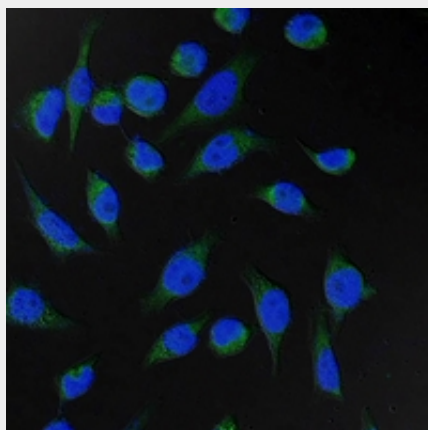
Anti-Fumarase Antibody - Protocols

Provided below are standard protocols that you may find useful for product applications.

- [Western Blot](#)
- [Blocking Peptides](#)
- [Dot Blot](#)
- [Immunohistochemistry](#)
- [Immunofluorescence](#)
- [Immunoprecipitation](#)
- [Flow Cytometry](#)
- [Cell Culture](#)

Anti-Fumarase Antibody - Images

Western blot analysis of Fumarase expression in 293T (A), HepG2 (B), Hela (C), mouse brain (D), rat brain (E) whole cell lysates.



Immunofluorescent analysis of Fumarase staining in Hela cells. Formalin-fixed cells were permeabilized with 0.1% Triton X-100 in TBS for 5-10 minutes and blocked with 3% BSA-PBS for 30 minutes at room temperature. Cells were probed with the primary antibody in 3% BSA-PBS and incubated overnight at 4 °C in a humidified chamber. Cells were washed with PBST and incubated

with a FITC-conjugated secondary antibody (green) in PBS at room temperature in the dark. DAPI was used to stain the cell nuclei (blue).

Anti-Fumarase Antibody - Background

KLH-conjugated synthetic peptide encompassing a sequence of human Fumarase. The exact sequence is proprietary.