

**Anti-Histone H3 (DiMethyl K9) Antibody**  
**Mouse monoclonal antibody to Histone H3 (DiMethyl K9)**  
**Catalog # AP61586**

## Specification

---

### Anti-Histone H3 (DiMethyl K9) Antibody - Product Information

Application	WB
Primary Accession	<a href="#">P68431</a> , <a href="#">Q71DI3</a> , <a href="#">P84243</a>
Other Accession	<a href="#">P68433</a> , <a href="#">P84228</a> , <a href="#">P84244</a>
Reactivity	Human, Mouse, Rat
Host	Mouse
Clonality	Monoclonal

### Anti-Histone H3 (DiMethyl K9) Antibody - Additional Information

#### Other Names

HIST1H3A; H3FA; HIST1H3B; H3FL; HIST1H3C; H3FC; HIST1H3D; H3FB; HIST1H3E; H3FD; HIST1H3F; H3FI; HIST1H3G; H3FH; HIST1H3H; H3FK; HIST1H3I; H3FF; HIST1H3J; H3FJ; Histone H3.1; Histone H3/a; Histone H3/b; Histone H3/c; Histone H3/d; Histone H3/f; Histone H3/h; Histone H3/i; Histone H3/j; Histone H3/k; Histone H3/l; HIST2H3A; HIST2H3C; H3F2; H3FM; HIST2H3D; Histone H3.2; Histone H3/m; Histone H3/o; H3F3A; H3.3A; H3F3; PP781; H3F3B; H3.3B; Histone H3.3

#### Target/Specificity

Recognizes endogenous levels of Histone H3 (DiMethyl K9) protein.

#### Dilution

WB~~WB (1/1000 - 1/3000), IH (1/200 - 1/500)

#### Format

Liquid in 0.42% Potassium phosphate, 0.87% Sodium chloride, pH 7.3, 30% glycerol, and 0.09% (W/V) sodium azide.

#### Storage

Store at -20 °C. Stable for 12 months from date of receipt

### Anti-Histone H3 (DiMethyl K9) Antibody - Protein Information

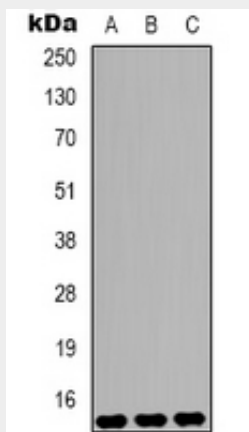
### Anti-Histone H3 (DiMethyl K9) Antibody - Protocols

Provided below are standard protocols that you may find useful for product applications.

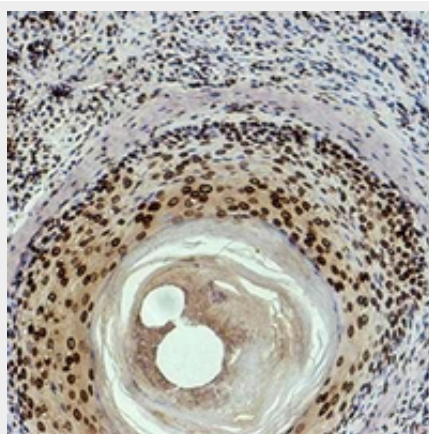
- [Western Blot](#)
- [Blocking Peptides](#)
- [Dot Blot](#)
- [Immunohistochemistry](#)

- [Immunofluorescence](#)
- [Immunoprecipitation](#)
- [Flow Cytometry](#)
- [Cell Culture](#)

### Anti-Histone H3 (DiMethyl K9) Antibody - Images



Western blot analysis of Histone H3 (DiMethyl K9) expression in Hela (A), Raw264.7 (B), rat heart (C) whole cell lysates.



Immunohistochemical analysis of Histone H3 (DiMethyl K9) staining in human skin formalin fixed paraffin embedded tissue section. The section was pre-treated using heat mediated antigen retrieval with sodium citrate buffer (pH 6.0). The section was then incubated with the antibody at room temperature and detected using an HRP conjugated compact polymer system. DAB was used as the chromogen. The section was then counterstained with haematoxylin and mounted with DPX.

### Anti-Histone H3 (DiMethyl K9) Antibody - Background

KLH-conjugated synthetic peptide encompassing a sequence of human Histone H3. The exact sequence is proprietary.