

**LRP6 Antibody (C-term T1546)**  
**Purified Rabbit Polyclonal Antibody (Pab)**  
**Catalog # AP6158a**

**Specification**

---

**LRP6 Antibody (C-term T1546) - Product Information**

Application	<b>WB, IHC-P,E</b>
Primary Accession	<a href="#">O75581</a>
Reactivity	<b>Human</b>
Host	<b>Rabbit</b>
Clonality	<b>Polyclonal</b>
Isotype	<b>Rabbit IgG</b>
Antigen Region	<b>1531-1560</b>

**LRP6 Antibody (C-term T1546) - Additional Information**

**Gene ID** 4040

**Other Names**

Low-density lipoprotein receptor-related protein 6, LRP-6, LRP6

**Target/Specificity**

This LRP6 antibody is generated from rabbits immunized with a KLH conjugated synthetic peptide between 1531-1560 amino acids from the C-terminal region of human LRP6.

**Dilution**

WB~~1:1000  
IHC-P~~1:10~50

**Format**

Purified polyclonal antibody supplied in PBS with 0.09% (W/V) sodium azide. This antibody is prepared by Saturated Ammonium Sulfate (SAS) precipitation followed by dialysis against PBS.

**Storage**

Maintain refrigerated at 2-8°C for up to 2 weeks. For long term storage store at -20°C in small aliquots to prevent freeze-thaw cycles.

**Precautions**

LRP6 Antibody (C-term T1546) is for research use only and not for use in diagnostic or therapeutic procedures.

**LRP6 Antibody (C-term T1546) - Protein Information**

**Name** LRP6

**Function** Component of the Wnt-Fzd-LRP5-LRP6 complex that triggers beta-catenin signaling through inducing aggregation of receptor-ligand complexes into ribosome-sized signalosomes. Cell-surface coreceptor of Wnt/beta-catenin signaling, which plays a pivotal role in bone formation.

The Wnt-induced Fzd/LRP6 coreceptor complex recruits DVL1 polymers to the plasma membrane which, in turn, recruits the AXIN1/GSK3B-complex to the cell surface promoting the formation of signalosomes and inhibiting AXIN1/GSK3-mediated phosphorylation and destruction of beta-catenin. Required for posterior patterning of the epiblast during gastrulation (By similarity).

#### Cellular Location

Cell membrane; Single-pass type I membrane protein. Endoplasmic reticulum. Membrane raft. Note=On Wnt signaling, undergoes a cycle of caveolin- or clathrin-mediated endocytosis and plasma membrane location. Released from the endoplasmic reticulum on palmitoylation. Mono-ubiquitination retains it in the endoplasmic reticulum in the absence of palmitoylation. On Wnt signaling, phosphorylated, aggregates and colocalizes with AXIN1 and GSK3B at the plasma membrane in LRP6- signalosomes. Chaperoned to the plasma membrane by MESD (By similarity).

#### Tissue Location

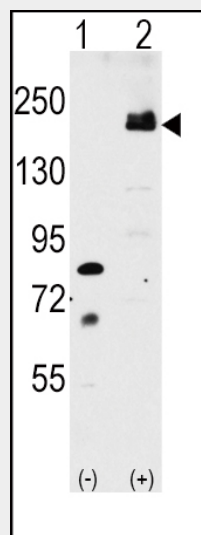
Widely coexpressed with LRP5 during embryogenesis and in adult tissues

### LRP6 Antibody (C-term T1546) - Protocols

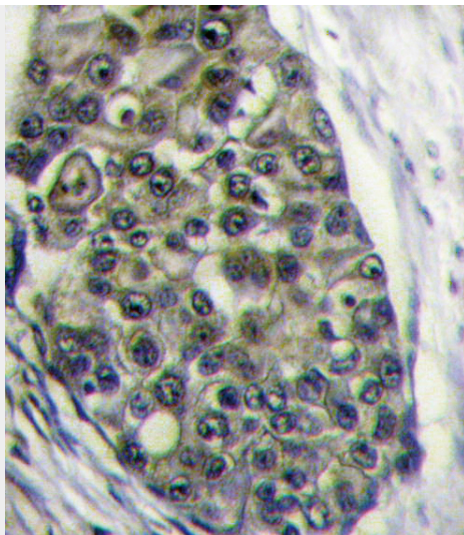
Provided below are standard protocols that you may find useful for product applications.

- [Western Blot](#)
- [Blocking Peptides](#)
- [Dot Blot](#)
- [Immunohistochemistry](#)
- [Immunofluorescence](#)
- [Immunoprecipitation](#)
- [Flow Cytometry](#)
- [Cell Culture](#)

### LRP6 Antibody (C-term T1546) - Images



Western blot analysis of LRP6 (arrow) using rabbit polyclonal LRP6 Antibody (C-term T1546) (Cat# AP6158a). 293 cell lysates (2 ug/lane) either nontransfected (Lane 1) or transiently transfected with the LRP6 gene (Lane 2) (Origene Technologies).



Formalin-fixed and paraffin-embedded human breast carcinoma tissue reacted with LRP6 Antibody (C-term T1546)(Cat.#AP6158a), which was peroxidase-conjugated to the secondary antibody, followed by DAB staining. This data demonstrates the use of this antibody for immunohistochemistry; clinical relevance has not been evaluated.

#### **LRP6 Antibody (C-term T1546) - Background**

LRP6 is essential for the Wnt/beta catenin signaling pathway, probably by acting as a coreceptor together with Frizzled for Wnt. It is a specific, high-affinity receptor for DKK1 and DKK2, but not DKK3. The interaction with DKK1 blocks LRP6-mediated Wnt/beta catenin signaling via LRP6 removal via Kremen proteins-mediated endocytosis.

#### **LRP6 Antibody (C-term T1546) - References**

Liu, G., et al., Mol. Cell. Biol. 23(16):5825-5835 (2003). Tamai, K., et al., Nature 407(6803):530-535 (2000). Brown, S.D., et al., Biochem. Biophys. Res. Commun. 248(3):879-888 (1998).

#### **LRP6 Antibody (C-term T1546) - Citations**

- [LRP6 protein regulates low density lipoprotein \(LDL\) receptor-mediated LDL uptake.](#)
- [Wild-type LRP6 inhibits, whereas atherosclerosis-linked LRP6R611C increases PDGF-dependent vascular smooth muscle cell proliferation.](#)
- [LRP6 overexpression defines a class of breast cancer subtype and is a target for therapy.](#)