

Anti-Phosphotyrosine Antibody
Mouse monoclonal antibody to Phosphotyrosine
Catalog # AP61596**Specification**

Anti-Phosphotyrosine Antibody - Product Information

Application	WB, IHC
Host	Mouse
Clonality	Monoclonal

Anti-Phosphotyrosine Antibody - Additional Information**Target/Specificity**

Purified protein corresponding to Phosphotyrosine.

Dilution

WB~~WB (1/1000 - 1/2000), IH (1/50 - 1/200)

IHC~~1:100~500

Format

Liquid in 0.42% Potassium phosphate, 0.87% Sodium chloride, pH 7.3, 30% glycerol, and 0.09% (W/V) sodium azide.

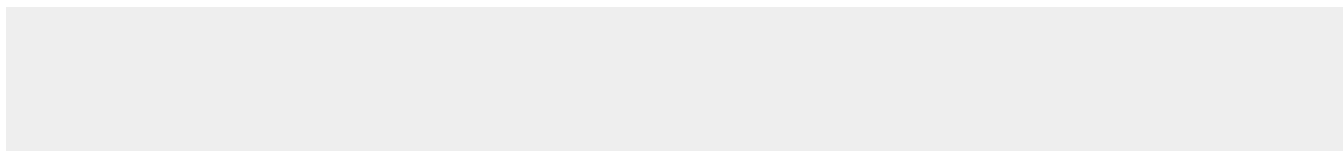
Storage

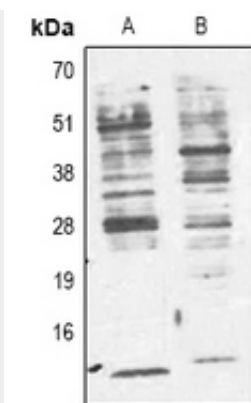
Store at -20 °C.Stable for 12 months from date of receipt

Anti-Phosphotyrosine Antibody - Protein Information**Anti-Phosphotyrosine Antibody - Protocols**

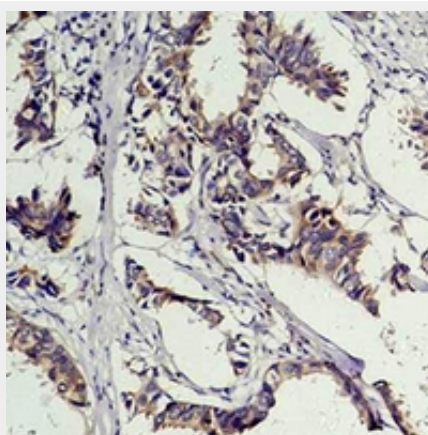
Provided below are standard protocols that you may find useful for product applications.

- [Western Blot](#)
- [Blocking Peptides](#)
- [Dot Blot](#)
- [Immunohistochemistry](#)
- [Immunofluorescence](#)
- [Immunoprecipitation](#)
- [Flow Cytometry](#)
- [Cell Culture](#)

Anti-Phosphotyrosine Antibody - Images



Western blot analysis of Phosphotyrosine expression in Jurkat (A), 293T (B) whole cell lysates.



Immunohistochemical analysis of Phosphotyrosine staining in human breast cancer formalin fixed paraffin embedded tissue section. The section was pre-treated using heat mediated antigen retrieval with sodium citrate buffer (pH 6.0). The section was then incubated with the antibody at room temperature and detected using an HRP conjugated compact polymer system. DAB was used as the chromogen. The section was then counterstained with haematoxylin and mounted with DPX.

Anti-Phosphotyrosine Antibody - Background

Purified protein corresponding to Phosphotyrosine.