

Anti-Cytokeratin 4 Antibody
Mouse monoclonal antibody to Cytokeratin 4
Catalog # AP61608**Specification**

Anti-Cytokeratin 4 Antibody - Product Information

Application	IHC
Primary Accession	P19013
Reactivity	Human
Host	Mouse
Clonality	Monoclonal
Calculated MW	56144

Anti-Cytokeratin 4 Antibody - Additional Information**Gene ID** 3851**Other Names**

CYK4; Keratin type II cytoskeletal 4; Cytokeratin-4; CK-4; Keratin-4; K4; Type-II keratin Kb4

Target/Specificity

Recognizes endogenous levels of Cytokeratin 4 protein.

Dilution

IHC~~1:100~500

Format

Mouse IgG1. Liquid in PBS containing 50% glycerol, 0.2% BSA and 0.09% (W/V) sodium azide.

Storage

Store at -20 °C.Stable for 12 months from date of receipt

Anti-Cytokeratin 4 Antibody - Protein Information**Name** KRT4**Synonyms** CYK4**Tissue Location**

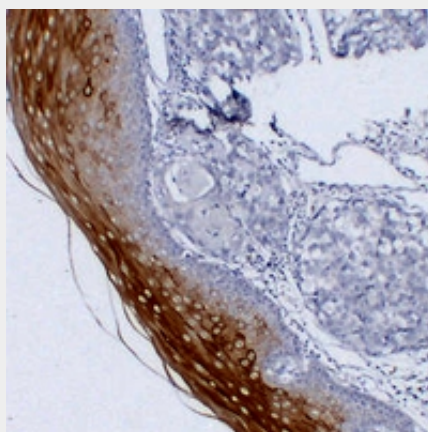
Detected in the suprabasal layer of the stratified epithelium of the esophagus, exocervix, vagina, mouth and lingual mucosa, and in cells and cell clusters in the mucosa and serous gland ducts of the esophageal submucosa (at protein level). Expressed widely in the exocervix and esophageal epithelium, with lowest levels detected in the basal cell layer.

Anti-Cytokeratin 4 Antibody - Protocols

Provided below are standard protocols that you may find useful for product applications.

- [Western Blot](#)
- [Blocking Peptides](#)
- [Dot Blot](#)
- [Immunohistochemistry](#)
- [Immunofluorescence](#)
- [Immunoprecipitation](#)
- [Flow Cytometry](#)
- [Cell Culture](#)

Anti-Cytokeratin 4 Antibody - Images



Immunohistochemical analysis of Cytokeratin 4 staining in human esophageal squamous carcinoma formalin fixed paraffin embedded tissue section. The section was pre-treated using heat mediated antigen retrieval with sodium citrate buffer (pH 6.0). The section was then incubated with the antibody at room temperature and detected using an HRP conjugated compact polymer system. DAB was used as the chromogen. The section was then counterstained with haematoxylin and mounted with DPX.

Anti-Cytokeratin 4 Antibody - Background

KLH-conjugated synthetic peptide encompassing a sequence within human Cytokeratin 4. The exact sequence is proprietary.