

Anti-BOB1 Antibody
Mouse monoclonal antibody to BOB1
Catalog # AP61611**Specification**

Anti-BOB1 Antibody - Product Information

Application	IHC
Primary Accession	Q16633
Reactivity	Human
Host	Mouse
Clonality	Monoclonal
Calculated MW	27436

Anti-BOB1 Antibody - Additional Information**Gene ID** 5450**Other Names**

OBF1; POU domain class 2-associating factor 1; B-cell-specific coactivator OBF-1; BOB-1; OCA-B; OCT-binding factor 1

Target/Specificity

KLH-conjugated synthetic peptide encompassing a sequence within human BOB1. The exact sequence is proprietary.

Dilution

IHC~~1:100~500

Format

Mouse IgG2a. Liquid in PBS containing 50% glycerol, 0.2% BSA and 0.09% (W/V) sodium azide.

Storage

Store at -20 °C. Stable for 12 months from date of receipt

Anti-BOB1 Antibody - Protein Information**Name** POU2AF1 ([HGNC:9211](#))**Function**

Transcriptional coactivator that specifically associates with either POU2F1/OCT1 or POU2F2/OCT2 (PubMed:<<http://www.uniprot.org/citations/7859290>>7859290). It boosts the POU2F1/OCT1 mediated promoter activity and to a lesser extent, that of POU2F2/OCT2 (PubMed:<<http://www.uniprot.org/citations/7779176>>7779176). It recognizes the POU domains of POU2F1/OCT1 and POU2F2/OCT2 (PubMed:<<http://www.uniprot.org/citations/7779176>>7779176). It is essential for the response of B-cells to antigens and required for the formation of germinal centers (PubMed:<<http://www.uniprot.org/citations/7623806>>7623806, PubMed:<<http://www.uniprot.org/citations/7859290>>7859290).

Regulates IL6 expression in B cells as POU2F2/OCT2 coactivator (By similarity).

Cellular Location

Nucleus.

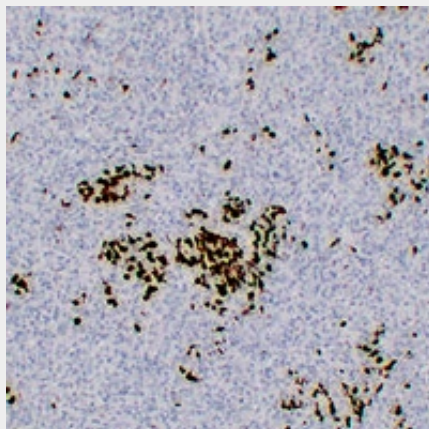
Tissue Location

B-cell specific (PubMed:7779176, PubMed:7859290). Detected in mainly in spleen, but also in thymus, peripheral blood leukocyte and small intestine (PubMed:7779176, PubMed:7859290)

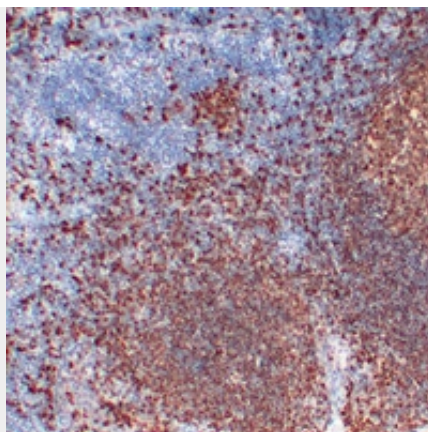
Anti-BOB1 Antibody - Protocols

Provided below are standard protocols that you may find useful for product applications.

- [Western Blot](#)
- [Blocking Peptides](#)
- [Dot Blot](#)
- [Immunohistochemistry](#)
- [Immunofluorescence](#)
- [Immunoprecipitation](#)
- [Flow Cytometry](#)
- [Cell Culture](#)

Anti-BOB1 Antibody - Images

Immunohistochemical analysis of BOB1 staining in human lymphoma formalin fixed paraffin embedded tissue section. The section was pre-treated using heat mediated antigen retrieval with sodium citrate buffer (pH 6.0). The section was then incubated with the antibody at room temperature and detected using an HRP conjugated compact polymer system. DAB was used as the chromogen. The section was then counterstained with haematoxylin and mounted with DPX.



Immunohistochemical analysis of BOB1 staining in human tonsil formalin fixed paraffin embedded tissue section. The section was pre-treated using heat mediated antigen retrieval with sodium citrate buffer (pH 6.0). The section was then incubated with the antibody at room temperature and detected using an HRP conjugated compact polymer system. DAB was used as the chromogen. The section was then counterstained with haematoxylin and mounted with DPX.

Anti-BOB1 Antibody - Background

KLH-conjugated synthetic peptide encompassing a sequence within human BOB1. The exact sequence is proprietary.