

**Anti-MYOD1 Antibody**  
**Mouse monoclonal antibody to MYOD1**  
**Catalog # AP61612****Specification**

---

**Anti-MYOD1 Antibody - Product Information**

Application	WB, IF, IHC
Primary Accession	<a href="#">P15172</a>
Reactivity	Human
Host	Mouse
Clonality	Monoclonal
Calculated MW	34501

**Anti-MYOD1 Antibody - Additional Information****Gene ID** 4654**Other Names**

BHLHC1; MYF3; MYOD; Myoblast determination protein 1; Class C basic helix-loop-helix protein 1; bHLHc1; Myogenic factor 3; Myf-3

**Target/Specificity**

Recognizes endogenous levels of MYOD1 protein.

**Dilution**WB~~1:1000  
IF~~1:50~200  
IHC~~1:100~500**Format**

Mouse IgG. Liquid in PBS containing 50% glycerol, 0.2% BSA and 0.09% (W/V) sodium azide.

**Storage**

Store at -20 °C. Stable for 12 months from date of receipt

**Anti-MYOD1 Antibody - Protein Information****Name** MYOD1**Synonyms** BHLHC1, MYF3, MYOD**Function**

Acts as a transcriptional activator that promotes transcription of muscle-specific target genes and plays a role in muscle differentiation. Together with MYF5 and MYOG, co-occupies muscle-specific gene promoter core region during myogenesis. Induces fibroblasts to differentiate into myoblasts. Interacts with and is inhibited by the twist protein. This interaction probably involves the basic domains of both proteins (By similarity).

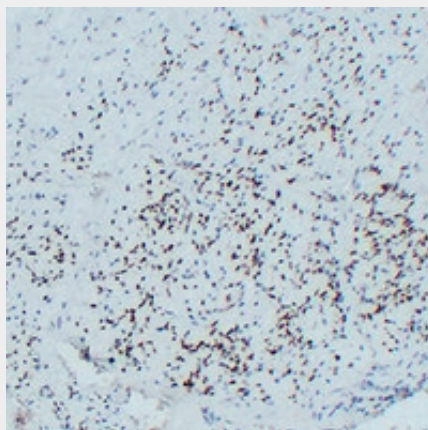
**Cellular Location**

Nucleus.

**Anti-MYOD1 Antibody - Protocols**

Provided below are standard protocols that you may find useful for product applications.

- [Western Blot](#)
- [Blocking Peptides](#)
- [Dot Blot](#)
- [Immunohistochemistry](#)
- [Immunofluorescence](#)
- [Immunoprecipitation](#)
- [Flow Cytometry](#)
- [Cell Culture](#)

**Anti-MYOD1 Antibody - Images**

Immunohistochemical analysis of MYOD1 staining in human rhabdomyosarcoma formalin fixed paraffin embedded tissue section. The section was pre-treated using heat mediated antigen retrieval with sodium citrate buffer (pH 6.0). The section was then incubated with the antibody at room temperature and detected using an HRP conjugated compact polymer system. DAB was used as the chromogen. The section was then counterstained with haematoxylin and mounted with DPX.

**Anti-MYOD1 Antibody - Background**

KLH-conjugated synthetic peptide encompassing a sequence within human MYOD1. The exact sequence is proprietary.