

Anti-ACP5 Antibody
Mouse monoclonal antibody to ACP5
Catalog # AP61615**Specification**

Anti-ACP5 Antibody - Product Information

Application	IF
Primary Accession	P13686
Reactivity	Human
Host	Mouse
Clonality	Monoclonal
Calculated MW	36599

Anti-ACP5 Antibody - Additional Information**Gene ID** 54**Other Names**

Tartrate-resistant acid phosphatase type 5; TR-AP; Tartrate-resistant acid ATPase; TrATPase; Type 5 acid phosphatase

Target/Specificity

Recognizes endogenous levels of ACP5 protein.

Dilution

IF~~IH (1/100 - 1/300)

Format

Mouse IgG2a. Liquid in PBS containing 50% glycerol, 0.2% BSA and 0.09% (W/V) sodium azide.

Storage

Store at -20 °C. Stable for 12 months from date of receipt

Anti-ACP5 Antibody - Protein Information**Name** ACP5**Function**

Involved in osteopontin/bone sialoprotein dephosphorylation. Its expression seems to increase in certain pathological states such as Gaucher and Hodgkin diseases, the hairy cell, the B-cell, and the T- cell leukemias.

Cellular Location

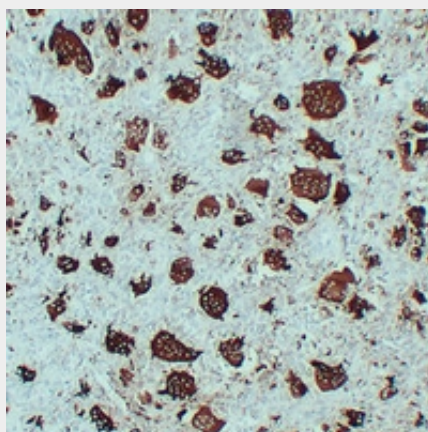
Lysosome.

Anti-ACP5 Antibody - Protocols

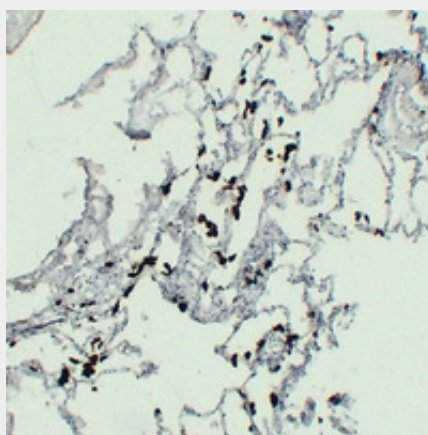
Provided below are standard protocols that you may find useful for product applications.

- [Western Blot](#)
- [Blocking Peptides](#)
- [Dot Blot](#)
- [Immunohistochemistry](#)
- [Immunofluorescence](#)
- [Immunoprecipitation](#)
- [Flow Cytometry](#)
- [Cell Culture](#)

Anti-ACP5 Antibody - Images



Immunohistochemical analysis of ACP5 staining in human gaint cell tumor formalin fixed paraffin embedded tissue section. The section was pre-treated using heat mediated antigen retrieval with sodium citrate buffer (pH 6.0). The section was then incubated with the antibody at room temperature and detected using an HRP conjugated compact polymer system. DAB was used as the chromogen. The section was then counterstained with haematoxylin and mounted with DPX.



Immunohistochemical analysis of ACP5 staining in human lung formalin fixed paraffin embedded tissue section. The section was pre-treated using heat mediated antigen retrieval with sodium citrate buffer (pH 6.0). The section was then incubated with the antibody at room temperature and detected using an HRP conjugated compact polymer system. DAB was used as the chromogen. The section was then counterstained with haematoxylin and mounted with DPX.

Anti-ACP5 Antibody - Background

KLH-conjugated synthetic peptide encompassing a sequence within human ACP5. The exact

sequence is proprietary.