

**Anti-Thyrotropin beta Antibody**  
**Mouse monoclonal antibody to Thyrotropin beta**  
**Catalog # AP61616****Specification**

---

**Anti-Thyrotropin beta Antibody - Product Information**

Application	IHC
Primary Accession	<a href="#">P01222</a>
Reactivity	Human
Host	Mouse
Clonality	Monoclonal
Calculated MW	15639

**Anti-Thyrotropin beta Antibody - Additional Information****Gene ID** 7252**Other Names**

Thyrotropin subunit beta; Thyroid-stimulating hormone subunit beta; TSH-B; TSH-beta; Thyrotropin beta chain; Thyrotropin alfa

**Target/Specificity**

KLH-conjugated synthetic peptide encompassing a sequence within human Thyrotropin beta. The exact sequence is proprietary.

**Dilution**

IHC~~1:100~500

**Format**

Mouse IgG1. Liquid in PBS containing 50% glycerol, 0.2% BSA and 0.09% (W/V) sodium azide.

**Storage**

Store at -20 °C.Stable for 12 months from date of receipt

**Anti-Thyrotropin beta Antibody - Protein Information****Name** TSHB**Function**

Indispensable for the control of thyroid structure and metabolism.

**Cellular Location**

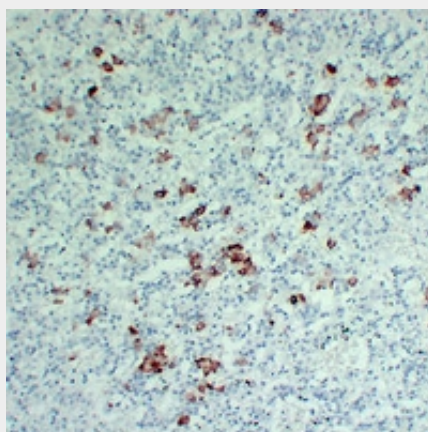
Secreted.

**Anti-Thyrotropin beta Antibody - Protocols**

Provided below are standard protocols that you may find useful for product applications.

- [Western Blot](#)
- [Blocking Peptides](#)
- [Dot Blot](#)
- [Immunohistochemistry](#)
- [Immunofluorescence](#)
- [Immunoprecipitation](#)
- [Flow Cytometry](#)
- [Cell Culture](#)

#### **Anti-Thyrotropin beta Antibody - Images**



Immunohistochemical analysis of Thyrotropin beta staining in human pituitary adenocarcinoma formalin fixed paraffin embedded tissue section. The section was pre-treated using heat mediated antigen retrieval with sodium citrate buffer (pH 6.0). The section was then incubated with the antibody at room temperature and detected using an HRP conjugated compact polymer system. DAB was used as the chromogen. The section was then counterstained with haematoxylin and mounted with DPX.

#### **Anti-Thyrotropin beta Antibody - Background**

KLH-conjugated synthetic peptide encompassing a sequence within human Thyrotropin beta. The exact sequence is proprietary.