

MAGEA11 Antibody (N-term)
Purified Rabbit Polyclonal Antibody (Pab)
Catalog # AP6161a**Specification**

MAGEA11 Antibody (N-term) - Product Information

Application	WB, IHC-P,E
Primary Accession	P43364
Other Accession	NP_005357
Reactivity	Human
Host	Rabbit
Clonality	Polyclonal
Isotype	Rabbit IgG
Calculated MW	48129
Antigen Region	198-228

MAGEA11 Antibody (N-term) - Additional Information**Gene ID** 4110**Other Names**

Melanoma-associated antigen 11, Cancer/testis antigen 111, CT111, MAGE-11 antigen, MAGEA11, MAGE11

Target/Specificity

This MAGEA11 antibody is generated from rabbits immunized with a KLH conjugated synthetic peptide between 198-228 amino acids from the N-terminal region of human MAGEA11.

Dilution

WB~~1:1000

IHC-P~~1:50~100

E~~Use at an assay dependent concentration.

Format

Purified polyclonal antibody supplied in PBS with 0.09% (W/V) sodium azide. This antibody is prepared by Saturated Ammonium Sulfate (SAS) precipitation followed by dialysis against PBS.

Storage

Maintain refrigerated at 2-8°C for up to 2 weeks. For long term storage store at -20°C in small aliquots to prevent freeze-thaw cycles.

Precautions

MAGEA11 Antibody (N-term) is for research use only and not for use in diagnostic or therapeutic procedures.

MAGEA11 Antibody (N-term) - Protein Information**Name** MAGEA11 {ECO:0000303|PubMed:28397838, ECO:0000312|HGNC:HGNC:6798}

Function Acts as androgen receptor coregulator that increases androgen receptor activity by modulating the receptors interdomain interaction. May play a role in embryonal development and tumor transformation or aspects of tumor progression.

Cellular Location

Nucleus. Cytoplasm

Tissue Location

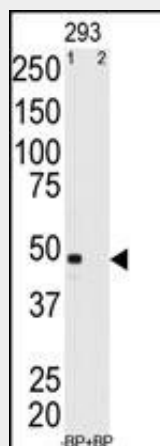
Expressed in tumors of several types, such as melanoma, head and neck squamous cell carcinoma, lung carcinoma and breast carcinoma. Expressed in testis, ovary, prostate, cancerous prostate, breast and adrenal tissue.

MAGEA11 Antibody (N-term) - Protocols

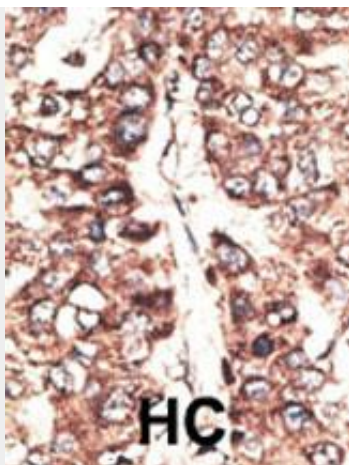
Provided below are standard protocols that you may find useful for product applications.

- [Western Blot](#)
- [Blocking Peptides](#)
- [Dot Blot](#)
- [Immunohistochemistry](#)
- [Immunofluorescence](#)
- [Immunoprecipitation](#)
- [Flow Cytometry](#)
- [Cell Culture](#)

MAGEA11 Antibody (N-term) - Images



Western blot analysis of anti-MAGEA11 Antibody (N-term)(Cat.#AP6161a) pre-incubated with and without blocking peptide in 293 cell line lysate. MAGEA11(arrow) was detected using the purified Pab.



Formalin-fixed and paraffin-embedded human cancer tissue reacted with the primary antibody, which was peroxidase-conjugated to the secondary antibody, followed by DAB staining. This data demonstrates the use of this antibody for immunohistochemistry; clinical relevance has not been evaluated. BC = breast carcinoma; HC = hepatocarcinoma.

MAGEA11 Antibody (N-term) - Background

MAGEA11 is a member of the MAGEA gene family. The members of this family have their entire coding sequences located in the last exon, and the encoded proteins show 50 to 80% sequence identity between each other. The promoters and first exons of the MAGEA genes show considerable variability, suggesting that the existence of this gene family enables the same function to be expressed under different transcriptional controls. The MAGEA genes are expressed at a high level in a number of tumors of various histologic types, and are silent in normal tissues with the exception of testis and placenta. The MAGEA genes are clustered on chromosome Xq28. They may be implicated in some hereditary disorders, such as dyskeratosis congenita.

MAGEA11 Antibody (N-term) - References

Rogner, U.C., et al., Genomics 29(3):725-731 (1995).
De Plaen, E., et al., Immunogenetics 40(5):360-369 (1994).