

Anti-C4BP beta Antibody
Rabbit polyclonal antibody to C4BP beta
Catalog # AP61631**Specification**

Anti-C4BP beta Antibody - Product Information

Application	WB, IF/IC, IHC
Primary Accession	P20851
Reactivity	Human
Host	Rabbit
Clonality	Polyclonal
Calculated MW	28357

Anti-C4BP beta Antibody - Additional Information**Gene ID** 725**Other Names**

C4b-binding protein beta chain

Target/Specificity

Recombinant full length protein of human C4BP beta

Dilution

WB~~1:1000

IF/IC~~N/A

IHC~~1:100~500

Format

Liquid in 0.42% Potassium phosphate, 0.87% Sodium chloride, pH 7.3, 30% glycerol, and 0.09% (W/V) sodium azide.

Storage

Store at -20 °C. Stable for 12 months from date of receipt

Anti-C4BP beta Antibody - Protein Information**Name** C4BPB**Function**

Controls the classical pathway of complement activation. It binds as a cofactor to C3b/C4b inactivator (C3bINA), which then hydrolyzes the complement fragment C4b. It also accelerates the degradation of the C4bC2a complex (C3 convertase) by dissociating the complement fragment C2a. It also interacts with anticoagulant protein S and with serum amyloid P component. The beta chain binds protein S.

Cellular Location

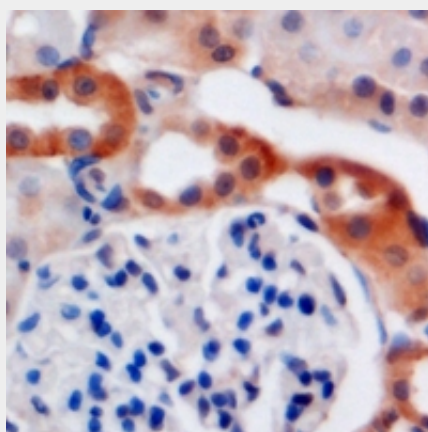
Secreted.

Anti-C4BP beta Antibody - Protocols

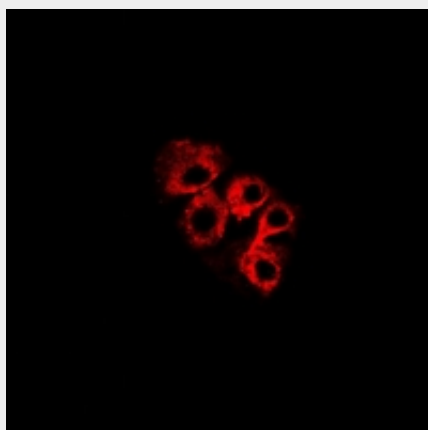
Provided below are standard protocols that you may find useful for product applications.

- [Western Blot](#)
- [Blocking Peptides](#)
- [Dot Blot](#)
- [Immunohistochemistry](#)
- [Immunofluorescence](#)
- [Immunoprecipitation](#)
- [Flow Cytometry](#)
- [Cell Culture](#)

Anti-C4BP beta Antibody - Images



Immunohistochemical analysis of C4BP beta staining in mouse kidney formalin fixed paraffin embedded tissue section. The section was pre-treated using heat mediated antigen retrieval with sodium citrate buffer (pH 6.0). The section was then incubated with the antibody at room temperature and detected using an HRP conjugated compact polymer system. DAB was used as the chromogen. The section was then counterstained with haematoxylin and mounted with DPX.



Immunofluorescent analysis of C4BP beta staining in Hela cells. Formalin-fixed cells were permeabilized with 0.1% Triton X-100 in TBS for 5-10 minutes and blocked with 3% BSA-PBS for 30 minutes at room temperature. Cells were probed with the primary antibody in 3% BSA-PBS and incubated overnight at 4 °C in a humidified chamber. Cells were washed with PBST and incubated with a DyLight 594-conjugated secondary antibody (red) in PBS at room temperature in the dark.

Anti-C4BP beta Antibody - Background

Recombinant full length protein of human C4BP beta