

MAGEC1 Antibody (C-term)
Purified Rabbit Polyclonal Antibody (Pab)
Catalog # AP6175a**Specification**

MAGEC1 Antibody (C-term) - Product Information

Application	WB, IHC-P,E
Primary Accession	O60732
Other Accession	NP_005453
Reactivity	Human
Host	Rabbit
Clonality	Polyclonal
Isotype	Rabbit IgG
Calculated MW	123643
Antigen Region	849-880

MAGEC1 Antibody (C-term) - Additional Information**Gene ID** 9947**Other Names**

Melanoma-associated antigen C1, Cancer/testis antigen 71, CT71, MAGE-C1 antigen, MAGEC1

Target/Specificity

This MAGEC1 antibody is generated from rabbits immunized with a KLH conjugated synthetic peptide between 849-880 amino acids from the C-terminal region of human MAGEC1.

Dilution

WB~~1:1000

IHC-P~~1:50~100

E~~Use at an assay dependent concentration.

Format

Purified polyclonal antibody supplied in PBS with 0.09% (W/V) sodium azide. This antibody is prepared by Saturated Ammonium Sulfate (SAS) precipitation followed by dialysis against PBS.

Storage

Maintain refrigerated at 2-8°C for up to 2 weeks. For long term storage store at -20°C in small aliquots to prevent freeze-thaw cycles.

Precautions

MAGEC1 Antibody (C-term) is for research use only and not for use in diagnostic or therapeutic procedures.

MAGEC1 Antibody (C-term) - Protein Information**Name** MAGEC1

Cellular Location

Cytoplasm.

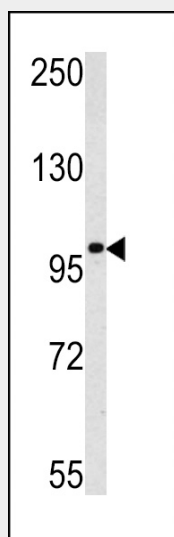
Tissue Location

Expressed in testis and in tumors of a wide variety of histologic types

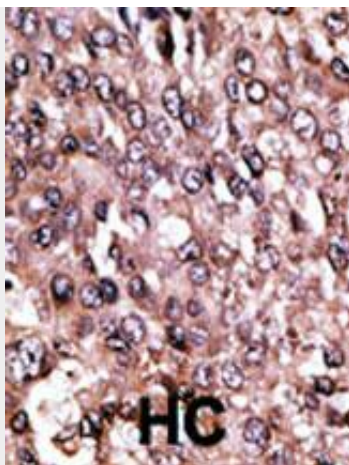
MAGEC1 Antibody (C-term) - Protocols

Provided below are standard protocols that you may find useful for product applications.

- [Western Blot](#)
- [Blocking Peptides](#)
- [Dot Blot](#)
- [Immunohistochemistry](#)
- [Immunofluorescence](#)
- [Immunoprecipitation](#)
- [Flow Cytometry](#)
- [Cell Culture](#)

MAGEC1 Antibody (C-term) - Images

Western blot analysis of MAGEC1 antibody (C-term) (Cat.# AP6175a) in K562 cell line lysates (35ug/lane). MAGEC1 (arrow) was detected using the purified Pab.



Formalin-fixed and paraffin-embedded human cancer tissue reacted with the primary antibody, which was peroxidase-conjugated to the secondary antibody, followed by AEC staining. This data demonstrates the use of this antibody for immunohistochemistry; clinical relevance has not been evaluated. BC = breast carcinoma; HC = hepatocarcinoma.

MAGEC1 Antibody (C-term) - Background

MAGEC1 is a member of the melanoma antigen gene (MAGE) family. The proteins of this family are tumor-specific antigens that can be recognized by autologous cytolytic T lymphocytes. This protein contains a large number of unique short repetitive sequences in front of the MAGE-homologous sequence, thus is about 800 residues longer than the other MAGE proteins. This gene is expressed in a significant proportion of tumors of various histological types, whereas it is silent in normal tissues, except testis. The function of this gene is unknown.

MAGEC1 Antibody (C-term) - References

- Jungbluth, A.A., et al., Int. J. Cancer 99(6):839-845 (2002).
Chen, Y.T., et al., Proc. Natl. Acad. Sci. U.S.A. 95(12):6919-6923 (1998).
Lucas, S., et al., Cancer Res. 58(4):743-752 (1998).
Lim, S.H., et al., Eur. J. Haematol. 67 (5-6), 332-334 (2001).