

**MAGED2 Antibody (C-term)**  
**Purified Rabbit Polyclonal Antibody (Pab)**  
**Catalog # AP6177a****Specification**

---

**MAGED2 Antibody (C-term) - Product Information**

Application	IHC-P, WB,E
Primary Accession	<a href="#">Q9UNF1</a>
Reactivity	Human
Host	Rabbit
Clonality	Polyclonal
Isotype	Rabbit IgG
Calculated MW	64954
Antigen Region	576-606

**MAGED2 Antibody (C-term) - Additional Information****Gene ID** 10916**Other Names**

Melanoma-associated antigen D2, 11B6, Breast cancer-associated gene 1 protein, BCG-1, Hepatocellular carcinoma-associated protein JCL-1, MAGE-D2 antigen, MAGED2, BCG1

**Target/Specificity**

This MAGED2 antibody is generated from rabbits immunized with a KLH conjugated synthetic peptide between 576-606 amino acids from the C-terminal region of human MAGED2.

**Dilution**

IHC-P~~1:50~100

WB~~1:1000

E~~Use at an assay dependent concentration.

**Format**

Purified polyclonal antibody supplied in PBS with 0.09% (W/V) sodium azide. This antibody is prepared by Saturated Ammonium Sulfate (SAS) precipitation followed by dialysis against PBS.

**Storage**

Maintain refrigerated at 2-8°C for up to 2 weeks. For long term storage store at -20°C in small aliquots to prevent freeze-thaw cycles.

**Precautions**

MAGED2 Antibody (C-term) is for research use only and not for use in diagnostic or therapeutic procedures.

**MAGED2 Antibody (C-term) - Protein Information****Name** MAGED2

## Synonyms BCG1

**Function** Regulates the expression, localization to the plasma membrane and function of the sodium chloride cotransporters SLC12A1 and SLC12A3, two key components of salt reabsorption in the distal renal tubule.

## Tissue Location

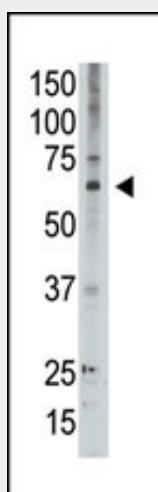
Widely expressed. In the developing and adult kidney, expressed in the thick ascending limb of the loop of Henle and the distal convoluted tubules outside the loop

## MAGED2 Antibody (C-term) - Protocols

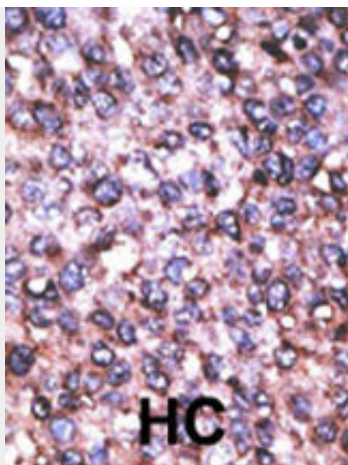
Provided below are standard protocols that you may find useful for product applications.

- [Western Blot](#)
- [Blocking Peptides](#)
- [Dot Blot](#)
- [Immunohistochemistry](#)
- [Immunofluorescence](#)
- [Immunoprecipitation](#)
- [Flow Cytometry](#)
- [Cell Culture](#)

## MAGED2 Antibody (C-term) - Images



The anti-MAGED2 C-term Antibody (Cat.#AP6177a) is used in Western blot to detect MAGED2 in A549 lysate.



Formalin-fixed and paraffin-embedded human cancer tissue reacted with the primary antibody, which was peroxidase-conjugated to the secondary antibody, followed by AEC staining. This data demonstrates the use of this antibody for immunohistochemistry; clinical relevance has not been evaluated. BC = breast carcinoma; HC = hepatocarcinoma.

#### **MAGED2 Antibody (C-term) - Background**

MAGED2 is a member of the MAGED gene family. In contrast to the MAGEA and MAGEB genes, which have their entire coding sequences located in the last exon, the MAGED genes have their coding sequences located throughout multiple exons. Also, the MAGEA and MAGEB genes are silent in normal tissues with the exception of testis and placenta, whereas the MAGED genes are expressed ubiquitously. The MAGED genes are clustered on chromosome Xp11. This gene is located in Xp11.2, a hot spot for X-linked mental retardation (XLMR).

#### **MAGED2 Antibody (C-term) - References**

Lucas, S., et al., Cancer Res. 59(16):4100-4103 (1999).  
Langnaese, K., et al., Cytogenet. Cell Genet. 94 (3-4), 233-240 (2001).