

MAGEF1 Antibody (C-term)
Purified Rabbit Polyclonal Antibody (Pab)
Catalog # AP6179a**Specification**

MAGEF1 Antibody (C-term) - Product Information

Application	WB, IHC-P,E
Primary Accession	O9HAY2
Other Accession	NP_071432
Reactivity	Human
Host	Rabbit
Clonality	Polyclonal
Isotype	Rabbit IgG
Calculated MW	35222
Antigen Region	274-303

MAGEF1 Antibody (C-term) - Additional Information**Gene ID** 64110**Other Names**

Melanoma-associated antigen F1, MAGE-F1 antigen, MAGEF1

Target/Specificity

This MAGEF1 antibody is generated from rabbits immunized with a KLH conjugated synthetic peptide between 274-303 amino acids from the C-terminal region of human MAGEF1.

Dilution

WB~~1:1000

IHC-P~~1:50~100

Format

Purified polyclonal antibody supplied in PBS with 0.09% (W/V) sodium azide. This antibody is prepared by Saturated Ammonium Sulfate (SAS) precipitation followed by dialysis against PBS.

Storage

Maintain refrigerated at 2-8°C for up to 2 weeks. For long term storage store at -20°C in small aliquots to prevent freeze-thaw cycles.

Precautions

MAGEF1 Antibody (C-term) is for research use only and not for use in diagnostic or therapeutic procedures.

MAGEF1 Antibody (C-term) - Protein Information**Name** MAGEF1 ([HGNC:29639](#))**Function** Enhances ubiquitin ligase activity of RING-type zinc finger- containing E3 ubiquitin

ligases. Proposed to act through recruitment and/or stabilization of the E2 ubiquitin-conjugating enzyme at the E3:substrate complex. MAGEF1-NSMCE1 ubiquitin ligase complex promotes proteasomal degradation of MMS19, a key component of the cytosolic iron-sulfur protein assembly (CIA) machinery. Down-regulation of MMS19 impairs the activity of several DNA repair and metabolism enzymes such as ERCC2/XPD, FANCI, RTEL1 and POLD1 that require iron-sulfur clusters as cofactors. May negatively regulate genome integrity by inhibiting homologous recombination-mediated double-strand break DNA repair (PubMed:[29225034](#)).

Tissue Location

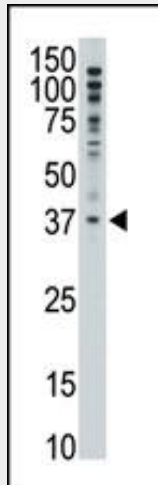
Ubiquitous..

MAGEF1 Antibody (C-term) - Protocols

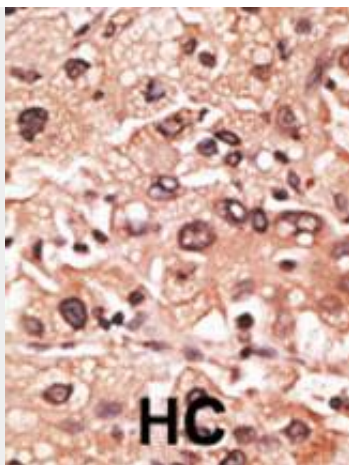
Provided below are standard protocols that you may find useful for product applications.

- [Western Blot](#)
- [Blocking Peptides](#)
- [Dot Blot](#)
- [Immunohistochemistry](#)
- [Immunofluorescence](#)
- [Immunoprecipitation](#)
- [Flow Cytometry](#)
- [Cell Culture](#)

MAGEF1 Antibody (C-term) - Images



The anti-MAGEF1 C-term Antibody (Cat.#AP6179a) is used in Western blot to detect MAGEF1 in A375 lysate.



Formalin-fixed and paraffin-embedded human cancer tissue reacted with the primary antibody, which was peroxidase-conjugated to the secondary antibody, followed by AEC staining. This data demonstrates the use of this antibody for immunohistochemistry; clinical relevance has not been evaluated. BC = breast carcinoma; HC = hepatocarcinoma.

MAGEF1 Antibody (C-term) - Background

Melanoma-associated antigen (MAGE) are completely silent in normal tissues, with the exception of male germ cells, and, for some of them, placenta. These antigens ought to be strictly tumor specific, expressed in tumor cells of various histological types. Because of their specific expression on tumor cells, these antigens are of particular interest for antitumor immunotherapy. Genes of the MAGE family direct the expression of tumor antigens that are recognized on a human melanoma by autologous cytolytic T lymphocytes. Though the function of MAGE is unknown, may play a role in embryonal development and tumor transformation or aspects of tumor progression.

MAGEF1 Antibody (C-term) - References

Stone, B., et al., Gene 267(2):173-182 (2001).