

**MLLT6 Antibody (C-term)**  
**Purified Rabbit Polyclonal Antibody (Pab)**  
**Catalog # AP6192a****Specification**

---

**MLLT6 Antibody (C-term) - Product Information**

Application	WB, IHC-P,E
Primary Accession	<a href="#">P55198</a>
Other Accession	<a href="#">NP_005928</a>
Reactivity	Human
Host	Rabbit
Clonality	Polyclonal
Isotype	Rabbit IgG
Calculated MW	112048
Antigen Region	1056-1086

**MLLT6 Antibody (C-term) - Additional Information****Gene ID** 4302**Other Names**

Protein AF-17, ALL1-fused gene from chromosome 17 protein, MLLT6, AF17

**Target/Specificity**

This MLLT6 antibody is generated from rabbits immunized with a KLH conjugated synthetic peptide between 1056-1086 amino acids from the C-terminal region of human MLLT6.

**Dilution**

WB~~1:1000

IHC-P~~1:50~100

E~~Use at an assay dependent concentration.

**Format**

Purified polyclonal antibody supplied in PBS with 0.09% (W/V) sodium azide. This antibody is prepared by Saturated Ammonium Sulfate (SAS) precipitation followed by dialysis against PBS.

**Storage**

Maintain refrigerated at 2-8°C for up to 2 weeks. For long term storage store at -20°C in small aliquots to prevent freeze-thaw cycles.

**Precautions**

MLLT6 Antibody (C-term) is for research use only and not for use in diagnostic or therapeutic procedures.

**MLLT6 Antibody (C-term) - Protein Information****Name** MLLT6

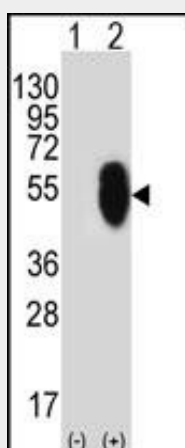
**Synonyms** AF17**Cellular Location**

Nucleus.

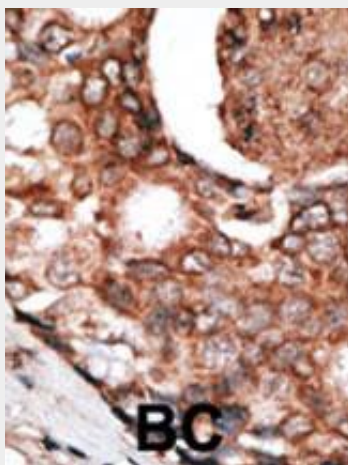
**MLLT6 Antibody (C-term) - Protocols**

Provided below are standard protocols that you may find useful for product applications.

- [Western Blot](#)
- [Blocking Peptides](#)
- [Dot Blot](#)
- [Immunohistochemistry](#)
- [Immunofluorescence](#)
- [Immunoprecipitation](#)
- [Flow Cytometry](#)
- [Cell Culture](#)

**MLLT6 Antibody (C-term) - Images**

Western blot analysis of MLLT6 (arrow) using rabbit polyclonal MLLT6 Antibody (E1071) (Cat. #AP6192a). 293 cell lysates (2 ug/lane) either nontransfected (Lane 1) or transiently transfected (Lane 2) with the MLLT6 gene.



Formalin-fixed and paraffin-embedded human cancer tissue reacted with the primary antibody,

which was peroxidase-conjugated to the secondary antibody, followed by DAB staining. This data demonstrates the use of this antibody for immunohistochemistry; clinical relevance has not been evaluated. BC = breast carcinoma; HC = hepatocarcinoma.

#### **MLLT6 Antibody (C-term) - Background**

Band 11q23 chromosome locations are associated with approximately 10% of patients with acute lymphoblastic leukemia (ALL) and more than 5% of patients with acute myeloid leukemia (AML). 11q23 translocation associated leukemias typically jointly express lymphoid and myeloid markers and exhibit poor prognosis. The gene at 11q23 involved in the translocations is known by multiple names, including ALL1, HRX, MLL, and TRX1. One of the more infrequent translocations, t(11;17)(q23;q21), MLLT6, encodes a protein of 1,093 amino acids, containing a leucine-zipper dimerization motif 3-prime to the fusion point and a cysteine-rich domain at the end terminus that can be arranged in 3 zinc fingers. MMLT6 contains amino acid runs associated with domains involved in transcriptional repression or activation. It has been proposed that MLLT6 represses truncated ALL1 function or inhibits function of the normal protein in leukemic cells.

#### **MLLT6 Antibody (C-term) - References**

Prasad, R., et al., Proc. Natl. Acad. Sci. U.S.A. 91(17):8107-8111 (1994).