

MMP20 Antibody (Center)
Purified Rabbit Polyclonal Antibody (Pab)
Catalog # AP6203a**Specification**

MMP20 Antibody (Center) - Product Information

Application	IHC-P, WB,E
Primary Accession	O60882
Other Accession	NP_004762
Reactivity	Human
Host	Rabbit
Clonality	Polyclonal
Isotype	Rabbit IgG
Antigen Region	233-262

MMP20 Antibody (Center) - Additional Information**Gene ID** 9313**Other Names**

Matrix metalloproteinase-20, MMP-20, 3424-, Enamel metalloproteinase, Enamelysin, MMP20

Target/Specificity

This MMP20 antibody is generated from rabbits immunized with a KLH conjugated synthetic peptide between 233-262 amino acids from the Central region of human MMP20.

Dilution

IHC-P~~1:50~100

WB~~1:1000

E~~Use at an assay dependent concentration.

Format

Purified polyclonal antibody supplied in PBS with 0.09% (W/V) sodium azide. This antibody is prepared by Saturated Ammonium Sulfate (SAS) precipitation followed by dialysis against PBS.

Storage

Maintain refrigerated at 2-8°C for up to 2 weeks. For long term storage store at -20°C in small aliquots to prevent freeze-thaw cycles.

Precautions

MMP20 Antibody (Center) is for research use only and not for use in diagnostic or therapeutic procedures.

MMP20 Antibody (Center) - Protein Information**Name** MMP20**Function** Degrades amelogenin, the major protein component of the enamel matrix and two of

the macromolecules characterizing the cartilage extracellular matrix: aggrecan and the cartilage oligomeric matrix protein (COMP). May play a central role in tooth enamel formation. Cleaves aggrecan at the '360-Asn-[Phe-361' site.

Cellular Location

Secreted, extracellular space, extracellular matrix

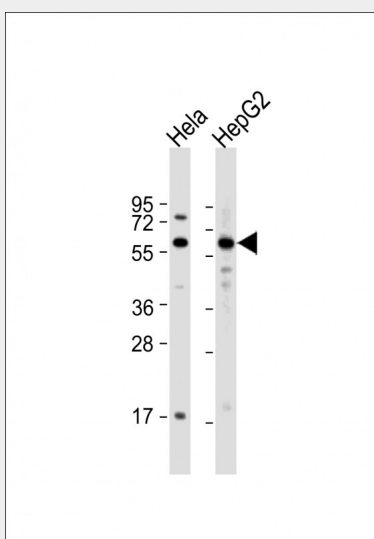
Tissue Location

Expressed specifically in the enamel organ.

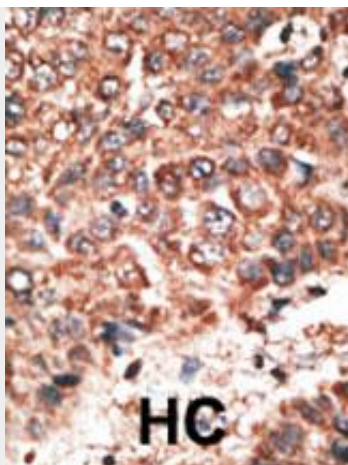
MMP20 Antibody (Center) - Protocols

Provided below are standard protocols that you may find useful for product applications.

- [Western Blot](#)
- [Blocking Peptides](#)
- [Dot Blot](#)
- [Immunohistochemistry](#)
- [Immunofluorescence](#)
- [Immunoprecipitation](#)
- [Flow Cytometry](#)
- [Cell Culture](#)

MMP20 Antibody (Center) - Images

All lanes : Anti-MMP20 Antibody (Y248) at 1:1000 dilution Lane 1: HeLa whole cell lysate Lane 2: HepG2 whole cell lysate Lysates/proteins at 20 µg per lane. Secondary Goat Anti-Rabbit IgG, (H+L), Peroxidase conjugated at 1/10000 dilution. Predicted band size : 54 kDa Blocking/Dilution buffer: 5% NFDM/TBST.



Formalin-fixed and paraffin-embedded human cancer tissue reacted with the primary antibody, which was peroxidase-conjugated to the secondary antibody, followed by DAB staining. This data demonstrates the use of this antibody for immunohistochemistry; clinical relevance has not been evaluated. BC = breast carcinoma; HC = hepatocarcinoma.

MMP20 Antibody (Center) - Background

MMP20 degrades amelogenin, the major protein component of the enamel matrix, as well as two of the macromolecules characterizing the cartilage extracellular matrix: aggrecan and the cartilage oligomeric matrix protein (COMP). MMP20 may play a central role in tooth enamel formation.

MMP20 Antibody (Center) - References

Llano, E., et al., Biochemistry 36(49):15101-15108 (1997).
Stracke, J.O., et al., FEBS Lett. 478 (1-2), 52-56 (2000).