

NRG2 Antibody (C-term)
Purified Rabbit Polyclonal Antibody (Pab)
Catalog # AP6223a**Specification**

NRG2 Antibody (C-term) - Product Information

Application	IHC-P, WB,E
Primary Accession	O14511
Other Accession	O35569
Reactivity	Human
Predicted	Rat
Host	Rabbit
Clonality	Polyclonal
Isotype	Rabbit IgG
Antigen Region	830~855

NRG2 Antibody (C-term) - Additional Information**Gene ID** 9542**Other Names**

Pro-neuregulin-2, membrane-bound isoform, Pro-NRG2, Neuregulin-2, NRG-2, Divergent of neuregulin-1, DON-1, Neural- and thymus-derived activator for ERBB kinases, NTAK, NRG2, NTAK

Target/Specificity

This NRG2 antibody is generated from rabbits immunized with a KLH conjugated synthetic peptide between 358-389 amino acids from the C-terminal region of human NRG2.

Dilution

IHC-P~~1:50~100

WB~~1:1000

E~~Use at an assay dependent concentration.

Format

Purified polyclonal antibody supplied in PBS with 0.09% (W/V) sodium azide. This antibody is prepared by Saturated Ammonium Sulfate (SAS) precipitation followed by dialysis against PBS.

Storage

Maintain refrigerated at 2-8°C for up to 2 weeks. For long term storage store at -20°C in small aliquots to prevent freeze-thaw cycles.

Precautions

NRG2 Antibody (C-term) is for research use only and not for use in diagnostic or therapeutic procedures.

NRG2 Antibody (C-term) - Protein Information**Name** NRG2

Synonyms NTAK

Function Direct ligand for ERBB3 and ERBB4 tyrosine kinase receptors. Concomitantly recruits ERBB1 and ERBB2 coreceptors, resulting in ligand-stimulated tyrosine phosphorylation and activation of the ERBB receptors. May also promote the heterodimerization with the EGF receptor.

Cellular Location

[Pro-neuregulin-2, membrane-bound isoform]: Cell membrane; Single-pass type I membrane protein. Note=Does not seem to be active.

Tissue Location

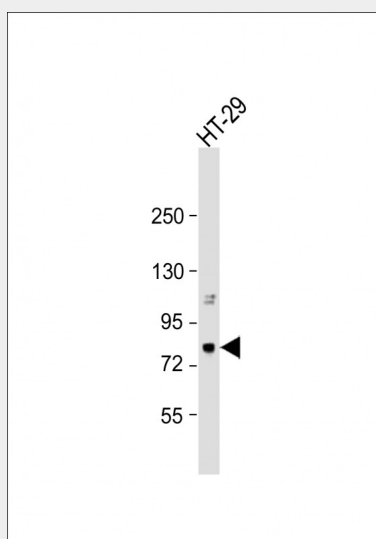
Restricted to the cerebellum in the adult.

NRG2 Antibody (C-term) - Protocols

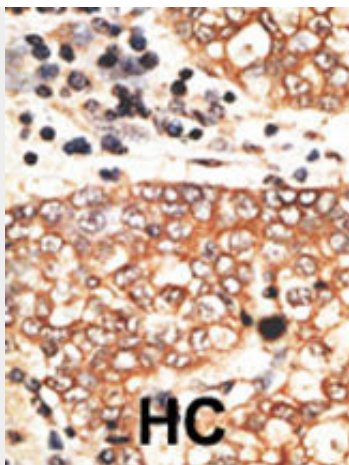
Provided below are standard protocols that you may find useful for product applications.

- [Western Blot](#)
- [Blocking Peptides](#)
- [Dot Blot](#)
- [Immunohistochemistry](#)
- [Immunofluorescence](#)
- [Immunoprecipitation](#)
- [Flow Cytometry](#)
- [Cell Culture](#)

NRG2 Antibody (C-term) - Images



Anti-NRG2 Antibody (P373) at 1:1000 dilution + HT-29 whole cell lysate Lysates/proteins at 20 µg per lane. Secondary Goat Anti-Rabbit IgG, (H+L), Peroxidase conjugated at 1/10000 dilution. Predicted band size : 92 kDa Blocking/Dilution buffer: 5% NFDm/TBST.



Formalin-fixed and paraffin-embedded human cancer tissue reacted with the primary antibody, which was peroxidase-conjugated to the secondary antibody, followed by AEC staining. This data demonstrates the use of this antibody for immunohistochemistry; clinical relevance has not been evaluated. BC = breast carcinoma; HC = hepatocarcinoma.

NRG2 Antibody (C-term) - Background

Neuregulin 2 (NRG2) is a novel member of the neuregulin family of growth and differentiation factors. Through interaction with the ErbB family of receptors, NRG2 induces the growth and differentiation of epithelial, neuronal, glial, and other types of cells. The gene consists of 12 exons and the genomic structure is similar to that of neuregulin 1 (NRG1), another member of the neuregulin family of ligands. NRG1 and NRG2 mediate distinct biological processes by acting at different sites in tissues and eliciting different biological responses in cells. There are six NRG2 alternatively spliced transcripts which are variable between the epidermal growth factor-like (EGF-like) and the transmembrane domains. The gene is located close to the region for demyelinating Charcot-Marie-Tooth disease locus, but is not responsible for this disease.

NRG2 Antibody (C-term) - References

Yamada, K., et al., Gene 255(1):15-24 (2000). Ring, H.Z., et al., Hum. Genet. 104(4):326-332 (1999). Busfield, S.J., et al., Mol. Cell. Biol. 17(7):4007-4014 (1997). Higashiyama, S., et al., J. Biochem. 122(3):675-680 (1997). Carraway, K.L. III, et al., Nature 387(6632):512-516 (1997).