

**PDAP1 Antibody (C-term)**  
**Purified Rabbit Polyclonal Antibody (Pab)**  
**Catalog # AP6258a**

**Specification**

---

**PDAP1 Antibody (C-term) - Product Information**

Application	WB,E
Primary Accession	<a href="#">Q13442</a>
Other Accession	<a href="#">Q62785</a> , <a href="#">Q3UHX2</a>
Reactivity	Human
Predicted	Mouse, Rat
Host	Rabbit
Clonality	Polyclonal
Isotype	Rabbit IgG
Calculated MW	20630
Antigen Region	142-171

**PDAP1 Antibody (C-term) - Additional Information**

**Gene ID** 11333

**Other Names**

28 kDa heat- and acid-stable phosphoprotein, PDGF-associated protein, PAP, PDGFA-associated protein 1, PAP1, PDAP1, HASPP28

**Target/Specificity**

This PDAP1 antibody is generated from rabbits immunized with a KLH conjugated synthetic peptide between 142-171 amino acids from the C-terminal region of human PDAP1.

**Dilution**

WB~~1:1000

**Format**

Purified polyclonal antibody supplied in PBS with 0.09% (W/V) sodium azide. This antibody is prepared by Saturated Ammonium Sulfate (SAS) precipitation followed by dialysis against PBS.

**Storage**

Maintain refrigerated at 2-8°C for up to 2 weeks. For long term storage store at -20°C in small aliquots to prevent freeze-thaw cycles.

**Precautions**

PDAP1 Antibody (C-term) is for research use only and not for use in diagnostic or therapeutic procedures.

**PDAP1 Antibody (C-term) - Protein Information**

**Name** PDAP1

## Synonyms HASPP28

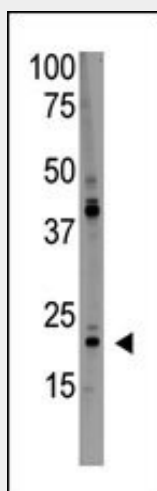
**Function** Enhances PDGFA-stimulated cell growth in fibroblasts, but inhibits the mitogenic effect of PDGFB.

## PDAP1 Antibody (C-term) - Protocols

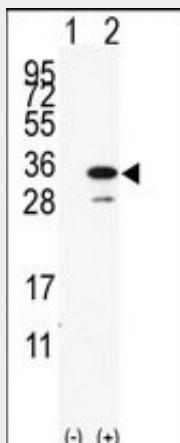
Provided below are standard protocols that you may find useful for product applications.

- [Western Blot](#)
- [Blocking Peptides](#)
- [Dot Blot](#)
- [Immunohistochemistry](#)
- [Immunofluorescence](#)
- [Immunoprecipitation](#)
- [Flow Cytometry](#)
- [Cell Culture](#)

## PDAP1 Antibody (C-term) - Images



The anti-PDAP1 Antibody (C-term)(Cat.#AP6258a) is used in Western blot to detect PDAP1 in HL60 lysate.



Western blot analysis of PDAP1 (arrow) using rabbit polyclonal PDAP1 Antibody

(C-term)(Cat.#AP6258a). 293 cell lysates (2 ug/lane) either nontransfected (Lane 1) or transiently transfected with the PDAP1 gene (Lane 2) (Origene Technologies).

**PDAP1 Antibody (C-term) - Background**

Human PDAP1 encodes a deduced 181-amino acid protein expressed in all tissues test with the exception of liver, most abundantly in brain. PDAP1 enhances PDGFA-stimulated cell growth in mouse fibroblasts, but inhibits the mitogenic effect of PDGFB. The binding between PDGFA and PDAP1 is a low affinity/high capacity interaction, as determined by solid-phase studies.

**PDAP1 Antibody (C-term) - References**

Fischer, W.H., et al., J. Neurochem. 66(5):2213-2216 (1996).