

**Cdc6 Antibody (N-term)**  
**Affinity Purified Rabbit Polyclonal Antibody (Pab)**  
**Catalog # AP6271a**

**Specification**

---

**Cdc6 Antibody (N-term) - Product Information**

Application	WB,E
Primary Accession	<a href="#">Q99741</a>
Reactivity	Human
Host	Rabbit
Clonality	Polyclonal
Isotype	Rabbit IgG
Calculated MW	62720
Antigen Region	32-61

**Cdc6 Antibody (N-term) - Additional Information**

**Gene ID** 990

**Other Names**

Cell division control protein 6 homolog, CDC6-related protein, Cdc18-related protein, HsCdc18, p62(cdc6), HsCDC6, CDC6, CDC18L

**Target/Specificity**

This Cdc6 antibody is generated from rabbits immunized with a KLH conjugated synthetic peptide between 32-61 amino acids from the N-terminal region of human Cdc6.

**Dilution**

WB~~1:1000

E~~Use at an assay dependent concentration.

**Format**

Purified polyclonal antibody supplied in PBS with 0.09% (W/V) sodium azide. This antibody is purified through a protein A column, followed by peptide affinity purification.

**Storage**

Maintain refrigerated at 2-8°C for up to 2 weeks. For long term storage store at -20°C in small aliquots to prevent freeze-thaw cycles.

**Precautions**

Cdc6 Antibody (N-term) is for research use only and not for use in diagnostic or therapeutic procedures.

**Cdc6 Antibody (N-term) - Protein Information**

**Name** CDC6

**Synonyms** CDC18L

**Function** Involved in the initiation of DNA replication. Also participates in checkpoint controls that ensure DNA replication is completed before mitosis is initiated.

**Cellular Location**

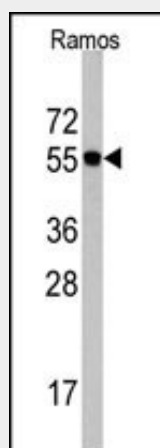
Nucleus. Cytoplasm Note=The protein is nuclear in G1 and cytoplasmic in S-phase cells (PubMed:9566895).

**Cdc6 Antibody (N-term) - Protocols**

Provided below are standard protocols that you may find useful for product applications.

- [Western Blot](#)
- [Blocking Peptides](#)
- [Dot Blot](#)
- [Immunohistochemistry](#)
- [Immunofluorescence](#)
- [Immunoprecipitation](#)
- [Flow Cytometry](#)
- [Cell Culture](#)

**Cdc6 Antibody (N-term) - Images**



Western blot analysis of Cdc6 Antibody (N-term)(Cat.# AP6271a) in Ramos cell line lysates (35ug/lane). Cdc6 (arrow) was detected using the purified Pab.

**Cdc6 Antibody (N-term) - Background**

Human Cdc6 is highly similar to *Saccharomyces cerevisiae* Cdc6, a protein essential for the initiation of DNA replication. This protein functions as a regulator at the early steps of DNA replication. It localizes in cell nucleus during cell cycle G1, but translocates to the cytoplasm at the start of S phase. The subcellular translocation of this protein during cell cycle is regulated through its phosphorylation by Cdks. Transcription of this protein was reported to be regulated in response to mitogenic signals through transcriptional control mechanism involving E2F proteins.

**Cdc6 Antibody (N-term) - References**

Alexandrow, M.G., et al., Mol. Cell. Biol. 24(4):1614-1627 (2004).  
Yim, H., et al., Mol. Biol. Cell 14(10):4250-4259 (2003).  
Clay-Farrace, L., et al., EMBO J. 22(3):704-712 (2003).  
Pelizon, C., et al., EMBO Rep. 3(8):780-784 (2002).

Bermejo, R., et al., Mol. Biol. Cell 13(11):3989-4000 (2002).