

**Cdc25A Antibody (N-term)**  
**Affinity Purified Rabbit Polyclonal Antibody (Pab)**  
**Catalog # AP6272a**

**Specification**

---

**Cdc25A Antibody (N-term) - Product Information**

Application	WB,E
Primary Accession	<a href="#">P30304</a>
Reactivity	Mouse
Host	Rabbit
Clonality	Polyclonal
Isotype	Rabbit IgG

**Cdc25A Antibody (N-term) - Additional Information**

**Gene ID** 993

**Other Names**

M-phase inducer phosphatase 1, Dual specificity phosphatase Cdc25A, CDC25A

**Target/Specificity**

This Cdc25A antibody is generated from rabbits immunized with a KLH conjugated synthetic peptide selected from the N-terminal region of human Cdc25A.

**Dilution**

WB~~1:1000

E~~Use at an assay dependent concentration.

**Format**

Purified polyclonal antibody supplied in PBS with 0.09% (W/V) sodium azide. This antibody is purified through a protein A column, followed by peptide affinity purification.

**Storage**

Maintain refrigerated at 2-8°C for up to 2 weeks. For long term storage store at -20°C in small aliquots to prevent freeze-thaw cycles.

**Precautions**

Cdc25A Antibody (N-term) is for research use only and not for use in diagnostic or therapeutic procedures.

**Cdc25A Antibody (N-term) - Protein Information**

**Name** CDC25A

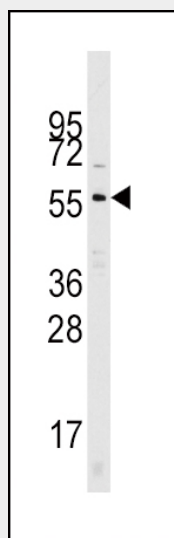
**Function** Tyrosine protein phosphatase which functions as a dosage- dependent inducer of mitotic progression (PubMed:[12676925](#), PubMed:[14559997](#), PubMed:[1836978](#), PubMed:[20360007](#)). Directly dephosphorylates CDK1 and stimulates its kinase activity (PubMed:[20360007](#)). Also dephosphorylates CDK2 in complex with cyclin-E, in vitro (PubMed:[20360007](#)).

### Cdc25A Antibody (N-term) - Protocols

Provided below are standard protocols that you may find useful for product applications.

- [Western Blot](#)
- [Blocking Peptides](#)
- [Dot Blot](#)
- [Immunohistochemistry](#)
- [Immunofluorescence](#)
- [Immunoprecipitation](#)
- [Flow Cytometry](#)
- [Cell Culture](#)

### Cdc25A Antibody (N-term) - Images



Western blot analysis of Cdc25A Pab (Cat# AP6272a) in mouse kidney tissue lysates (35ug/lane). Cdc25A (arrow) was detected using the purified Pab.

### Cdc25A Antibody (N-term) - Background

CDC25A is a member of the CDC25 family of phosphatases. CDC25A is required for progression from G1 to the S phase of the cell cycle. It activates the cyclin-dependent kinase CDC2 by removing two phosphate groups. CDC25A is specifically degraded in response to DNA damage, which prevents cells with chromosomal abnormalities from progressing through cell division. CDC25A is an oncogene, although its exact role in oncogenesis has not been demonstrated.

### Cdc25A Antibody (N-term) - References

- Ito, Y., et al., Int. J. Mol. Med. 13(3):431-435 (2004).  
Nemoto, K., et al., Prostate 58(1):95-102 (2004).  
Goloudina, A., et al., Cell Cycle 2(5):473-478 (2003).  
Chen, M.S., et al., Mol. Cell. Biol. 23(21):7488-7497 (2003).  
Chow, J.P., et al., Mol. Biol. Cell 14(10):3989-4002 (2003).