

TOB2 Antibody (N-term)
Purified Rabbit Polyclonal Antibody (Pab)
Catalog # AP6274a**Specification**

TOB2 Antibody (N-term) - Product Information

Application	WB, IHC-P,E
Primary Accession	Q14106
Other Accession	Q61471 , P50616
Reactivity	Human
Predicted	Mouse
Host	Rabbit
Clonality	Polyclonal
Isotype	Rabbit IgG
Calculated MW	36632
Antigen Region	17-46

TOB2 Antibody (N-term) - Additional Information**Gene ID** 10766**Other Names**

Protein Tob2, Protein Tob4, Transducer of erbB-2 2, TOB2, KIAA1663, TOB4, TROB2

Target/Specificity

This TOB2 antibody is generated from rabbits immunized with a KLH conjugated synthetic peptide between 17-46 amino acids from the N-terminal region of human TOB2.

Dilution

WB~~1:1000

IHC-P~~1:10~50

Format

Purified polyclonal antibody supplied in PBS with 0.09% (W/V) sodium azide. This antibody is prepared by Saturated Ammonium Sulfate (SAS) precipitation followed by dialysis against PBS.

Storage

Maintain refrigerated at 2-8°C for up to 2 weeks. For long term storage store at -20°C in small aliquots to prevent freeze-thaw cycles.

Precautions

TOB2 Antibody (N-term) is for research use only and not for use in diagnostic or therapeutic procedures.

TOB2 Antibody (N-term) - Protein Information**Name** TOB2

Synonyms KIAA1663, TOB4, TROB2

Function Anti-proliferative protein inhibits cell cycle progression from the G0/G1 to S phases.

Cellular Location

Cytoplasm.

Tissue Location

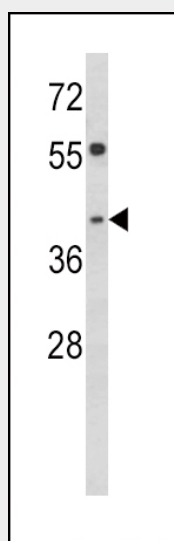
Ubiquitous.

TOB2 Antibody (N-term) - Protocols

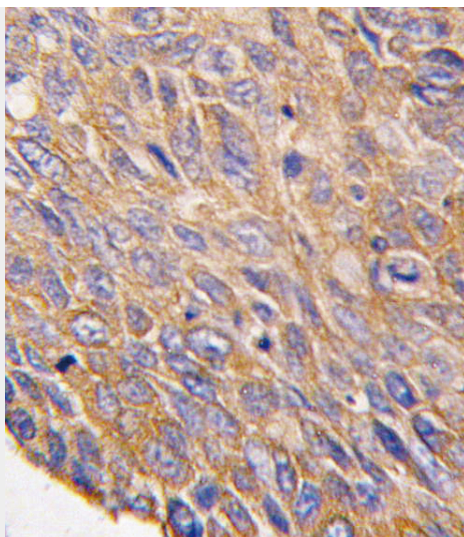
Provided below are standard protocols that you may find useful for product applications.

- [Western Blot](#)
- [Blocking Peptides](#)
- [Dot Blot](#)
- [Immunohistochemistry](#)
- [Immunofluorescence](#)
- [Immunoprecipitation](#)
- [Flow Cytometry](#)
- [Cell Culture](#)

TOB2 Antibody (N-term) - Images



Western blot analysis of TOB2 Antibody (N-term) (Cat. #AP6274a) in HepG2 cell line lysates (35ug/lane). TOB2 (arrow) was detected using the purified Pab.



Formalin-fixed and paraffin-embedded human lung carcinoma tissue reacted with TOB2 antibody (N-term)(Cat.#AP6274a), which was peroxidase-conjugated to the secondary antibody, followed by DAB staining. This data demonstrates the use of this antibody for immunohistochemistry; clinical relevance has not been evaluated.

TOB2 Antibody (N-term) - Background

TOB2 belongs to the TOB /BTG1 family of antiproliferative proteins, which are involved in the regulation of cell cycle progression.

TOB2 Antibody (N-term) - References

Sasajima,H., Eur. J. Biochem. 269 (14), 3596-3604 (2002)
Yoshida,Y., Jpn. J. Cancer Res. 92 (6), 592-596 (2001)
Suzuki,T., Genes Cells 6 (2), 131-138 (2001)
Ikematsu,N., Oncogene 18 (52), 7432-7441 (1999)