

HES1 Antibody (N-term T24)
Purified Rabbit Polyclonal Antibody (Pab)
Catalog # AP6276a**Specification**

HES1 Antibody (N-term T24) - Product Information

Application	FC, WB, IF,E
Primary Accession	Q14469
Other Accession	Q04666 , P35428 , Q3ZBG4 , Q8AVU4 , Q6IRB2
Reactivity	Human
Predicted	Xenopus, Bovine, Mouse, Rat
Host	Rabbit
Clonality	Polyclonal
Isotype	Rabbit IgG
Antigen Region	9-38

HES1 Antibody (N-term T24) - Additional Information**Gene ID** 3280**Other Names**

Transcription factor HES-1, Class B basic helix-loop-helix protein 39, bHLHb39, Hairy and enhancer of split 1, Hairy homolog, Hairy-like protein, hHL, HES1, BHLHB39, HL, HRY

Target/Specificity

This HES1 antibody is generated from rabbits immunized with a KLH conjugated synthetic peptide between 9-38 amino acids from the N-terminal region of human HES1.

Dilution

FC~~1:10~50

WB~~1:1000

IF~~1:10~50

E~~Use at an assay dependent concentration.

Format

Purified polyclonal antibody supplied in PBS with 0.09% (W/V) sodium azide. This antibody is prepared by Saturated Ammonium Sulfate (SAS) precipitation followed by dialysis against PBS.

Storage

Maintain refrigerated at 2-8°C for up to 2 weeks. For long term storage store at -20°C in small aliquots to prevent freeze-thaw cycles.

Precautions

HES1 Antibody (N-term T24) is for research use only and not for use in diagnostic or therapeutic procedures.

HES1 Antibody (N-term T24) - Protein Information

Name HES1

Synonyms BHLHB39, HL, HRY

Function Transcriptional repressor of genes that require a bHLH protein for their transcription. May act as a negative regulator of myogenesis by inhibiting the functions of MYOD1 and ASH1. Binds DNA on N-box motifs: 5'-CACNAG-3' with high affinity and on E-box motifs: 5'-CANNTG-3' with low affinity (By similarity). May play a role in a functional FA core complex response to DNA cross-link damage, being required for the stability and nuclear localization of FA core complex proteins, as well as for FANCD2 monoubiquitination in response to DNA damage.

Cellular Location

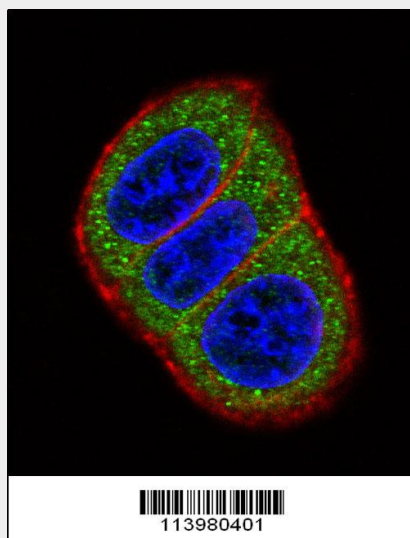
Nucleus.

HES1 Antibody (N-term T24) - Protocols

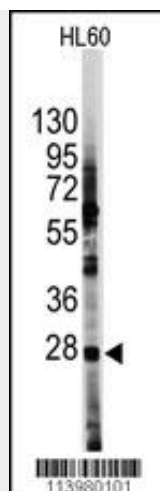
Provided below are standard protocols that you may find useful for product applications.

- [Western Blot](#)
- [Blocking Peptides](#)
- [Dot Blot](#)
- [Immunohistochemistry](#)
- [Immunofluorescence](#)
- [Immunoprecipitation](#)
- [Flow Cytometry](#)
- [Cell Culture](#)

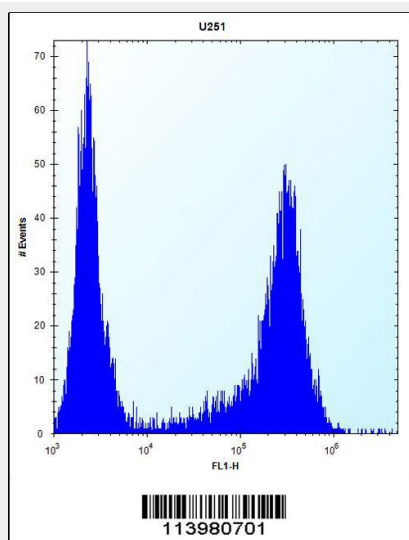
HES1 Antibody (N-term T24) - Images



Confocal immunofluorescent analysis of HES1 Antibody (N-term T24)(Cat#AP6276a) with HeLa cell followed by Alexa Fluor 488-conjugated goat anti-rabbit IgG (green). Actin filaments have been labeled with Alexa Fluor 555 phalloidin (red). DAPI was used to stain the cell nuclear (blue).



Western blot analysis of anti-HES1 Antibody (N-term T24) (RB13980) in HL60 cell line lysates (35ug/lane). HES1 (arrow) was detected using the purified Pab.



HES1 Antibody (N-term T24) (Cat. #AP6276a) flow cytometric analysis of U251 cells (right histogram) compared to a negative control cell (left histogram). FITC-conjugated goat-anti-rabbit secondary antibodies were used for the analysis.

HES1 Antibody (N-term T24) - Background

HES1 belongs to the basic helix-loop-helix family of transcription factors. It is a transcriptional repressor of genes that require a bHLH protein for their transcription. HES1 has a particular type of basic domain that contains a helix interrupting protein that binds to the N-box rather than the canonical E-box.

HES1 Antibody (N-term T24) - References

Liu,J., Int. J. Gynecol. Cancer 17 (6), 1293-1299 (2007)
Karlsson,C., J. Orthop. Res. 25 (2), 152-163 (2007)